



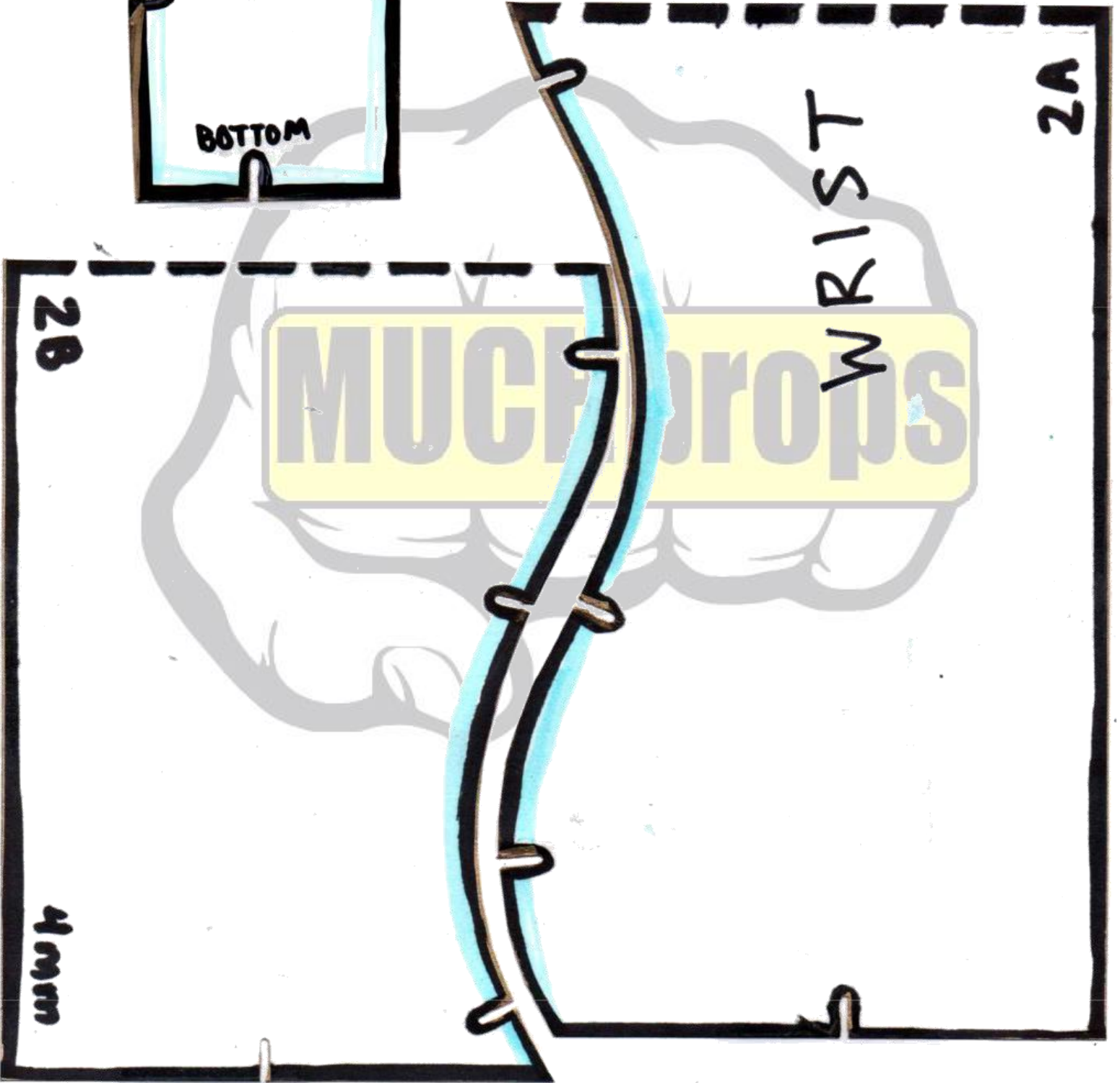
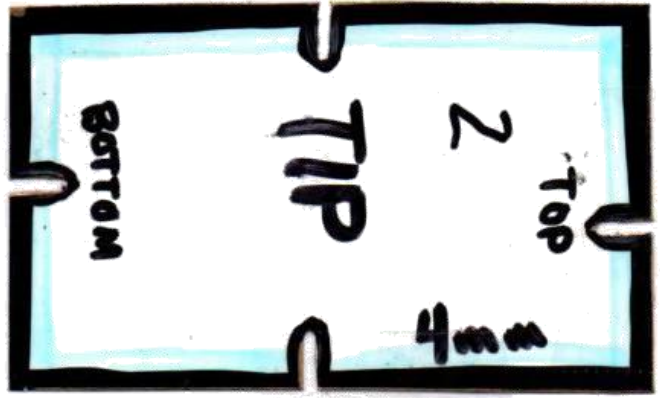
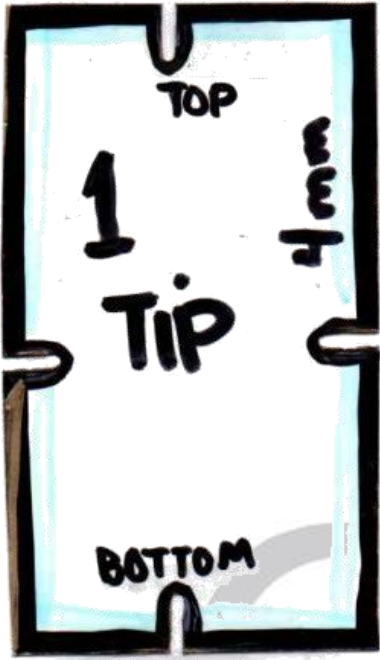
# LEGO HANDS

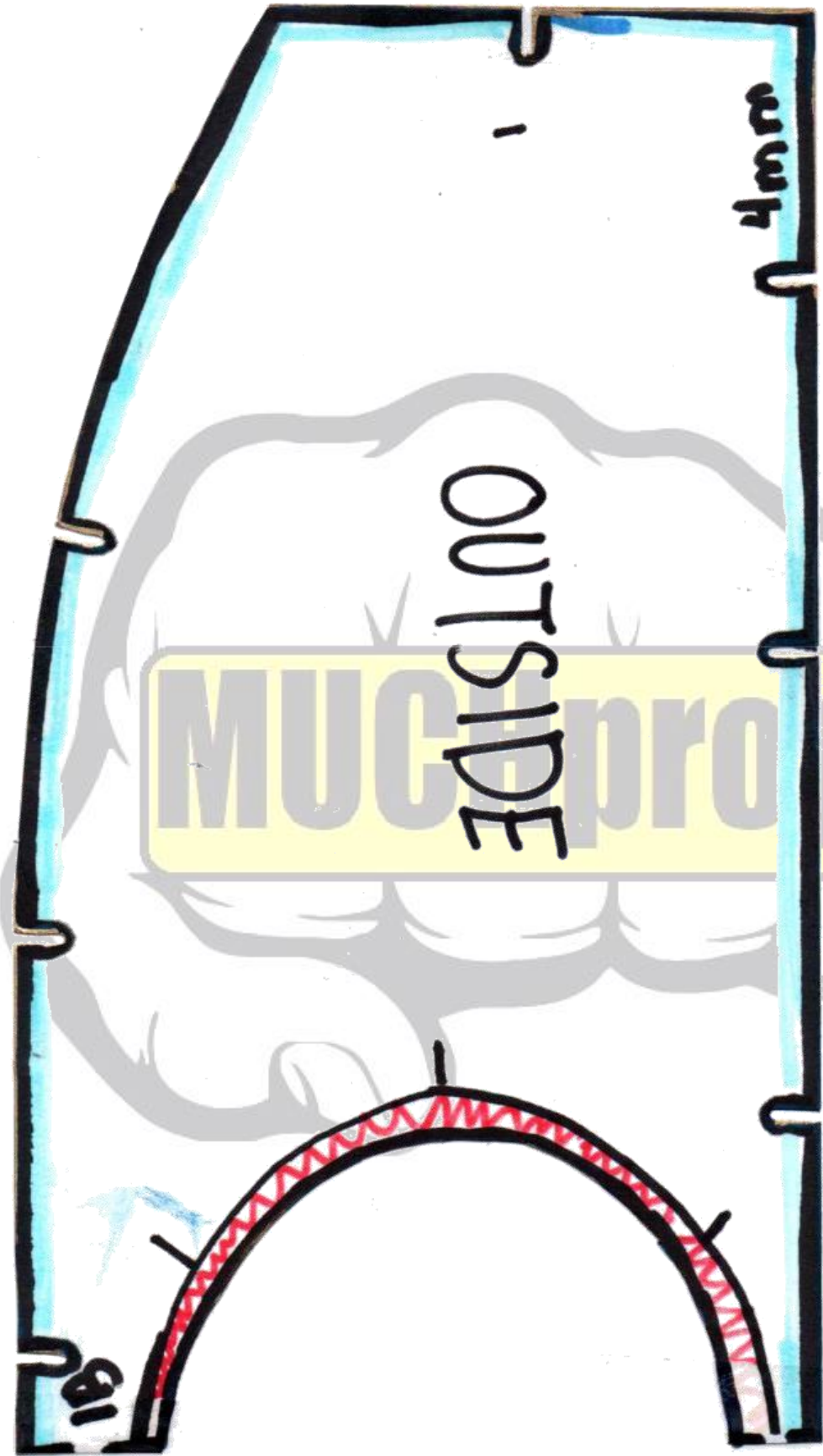
By Thomas Hanna

I made this template for making some quick and easy Lego Hands. Please feel free to make any modifications you would like and share this template with your friends.

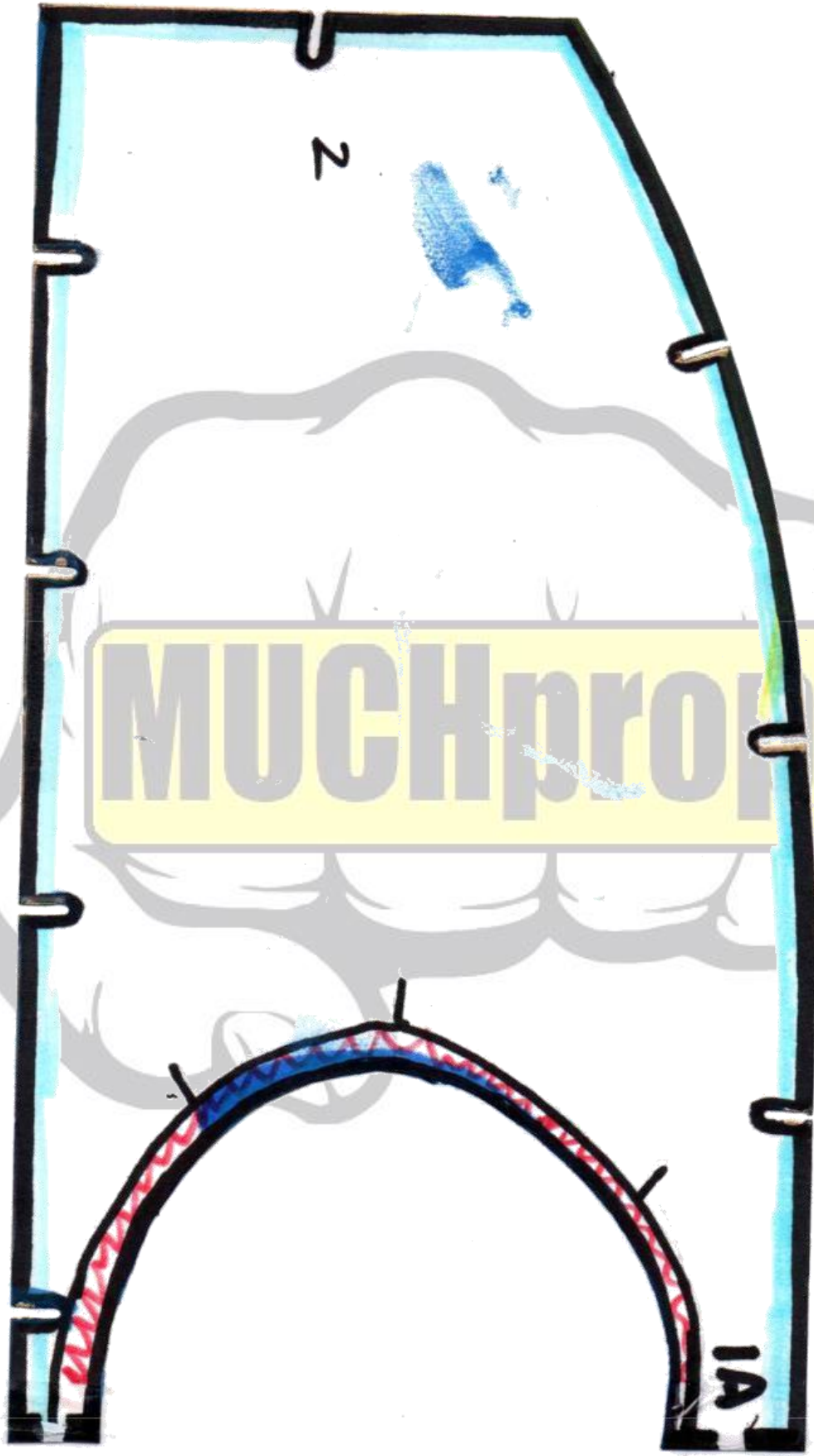
- **Cut out all the pieces of the template and trace them onto the material of your choice ( I used 4mm EVA foam)**
- **Most of the parts contain registrations marks, which look like little U's on the edges. These marks are to help you keep the shape aligned. You trace these onto the foam, you do not cut them.**
- **Some of the parts were too big to fit on a normal sheet of paper so I had to cut them up. These are piece with a number followed by a letter ie 1A&1B. Tape them together before tracing onto your material.**
- **There are blue highlighted edges on a lot of the pieces, this blue means that the edge it is on needs a 45 degree angled cut inward. The outside piece has a red zigzag on it, this means that it will be overlapped at this area by the wrist.**
- **You could certainly try and make it out of other thicknesses of EVA, I chose 4 mm What the Foam from Cosplay Apprentice because it is a lot more dense than regular EVA, I can only speak to the materials that I used for the build.**
- **Some adjustments and reductions in size may be needed in order to fit smaller hands. I wear XL gloves, so hopefully that gives you an idea of the size. It is templated to fit a large adult male.**
- **Along with the EVA/craft foam you will need: contact cement, super glue, a rotary tool, rotary sanding bits, scissors, xacto or box cutter, Plasti dip or something to seal it with, spray paint, and acrylic paints.**

Hopefully this is helpful and ke0ep in mind it is a free template ( so please don't be judgmental ). Share this with everyone you know. I spend a lot of extra time making these templates and would love to be tagged in photos of your end results on social media. And inevitably someone is going to ask you, HOW did you make that? Give them one of these  and tell them MUCH PROPS.





MUCH props



MUCHprops

2

IA

