

## Solar lawn light controller

### ANA608-6

#### Product Overview:

Solar lawn lights mainly use the energy of solar cells to work, when the sun shines on the solar cells during the day

It converts the light energy into electric energy and stores it in the battery, which is then used as the lawn lamp at night. led (led)

Provide power. Its advantages are mainly safety, energy saving, convenience, and environmental protection.

Solar lawn light controller ANA608 It is specially developed by our company according to the working characteristics of solar lawn lights.

TO-94 Package, few peripheral components, easy to produce; this controller has high conversion efficiency: 85~90 % (Typical value),

It can reduce the power requirements of solar panels; the output current can be adjusted; the current consistency is good.

#### Features:

**Very few peripheral components, only one inductor and one diode are needed, which is easy to produce**

**high efficiency: 85~90 % (Typical value), can make full use of solar cells**

**Adjust current through inductance, simple and convenient, stable current and good consistency**

**Input current is not affected by led Influence of turn-on voltage**

**Low enable voltage to ensure that the lamp is turned on when the outside light is dark enough**

**Enabling control has Schmidt performance to ensure that the lamp is not flickering during conversion**

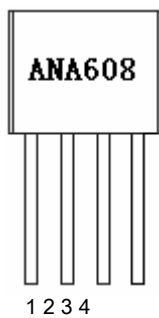
#### Application scope:

Rechargeable battery: single-cell rechargeable battery drive

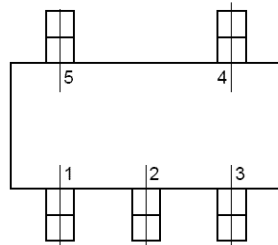
Be applicable led Range: various colors led

#### Package form and pin description

TOP VIEW



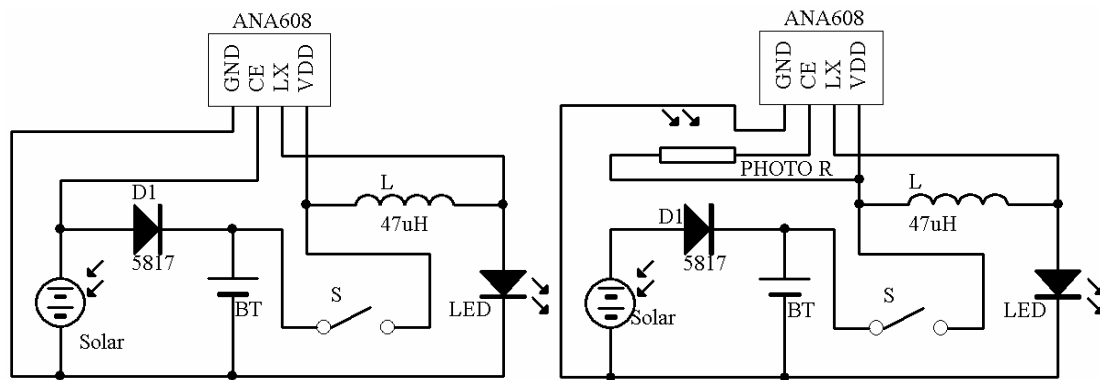
TO-94 Package



SOT23-5 Package

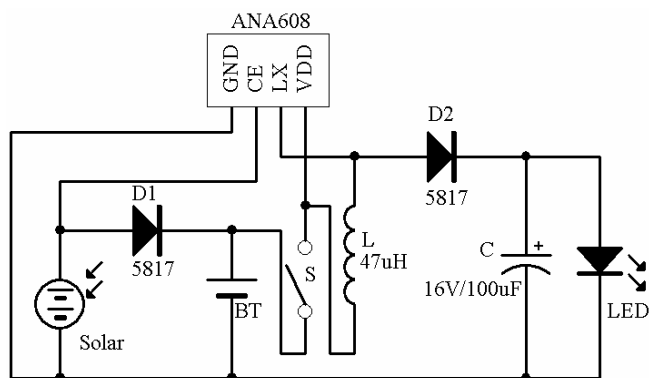
Pin number		Pin name	Pin function
TO-94	SOT23-5		
1	4	GND	Ground pin
2	3	CE	Enable
3	5	LX	Switch pin
4	2	VDD	Input power

## Application circuit



Enable controlled by solar panel

Enable controlled by photoresistor



Drive colorful led

## Component parameters:

Components	Specification requirements	model
led driver		ANA608
diode	Schottky diodes	1N5817
inductance	0410 Internal resistance< 1.2 Europe	Color ring inductance
Photoresistance	Light resistance< 10K Dark resistance> 1M	

## Current regulation reference:

The input current can be changed by changing the inductance value. The relationship between the inductance and the input current can be referred to the following table:

Inductance	Input current (input voltage 1.30V )	
	Drive white light led Time	Drive yellow light led Time
150uH	11-13mA	11-13mA
100uH	18-21mA	20-24mA
82uH	22-25mA	24-27mA
47uH	29-34mA	30-35mA

## note:

1 , The copyright of this product information belongs to Nanjing Enge Lanbo Microelectronics Co., Ltd.;

2 , Due to the improvement of products or (and) technology, the information contained in this product data may have changed.

It is impossible to ensure timely notification. Please make sure that the information you refer to is up to date before using the product.