

ゼルダの伝説 リンク

— ブレス オブ ザ ワイルド —

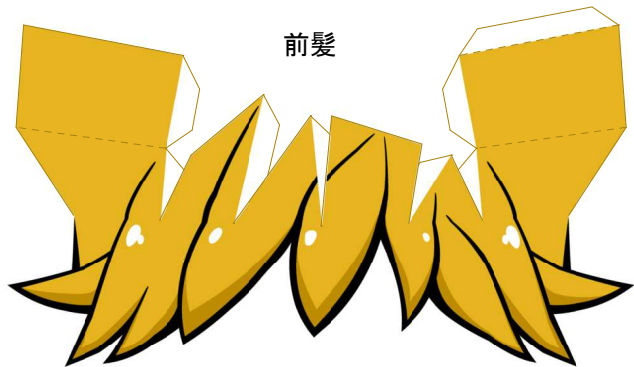
ペーパークラフト

つくった人: ムウミン

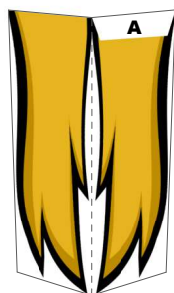
<https://muumin-craft.wixsite.com/papercraft>



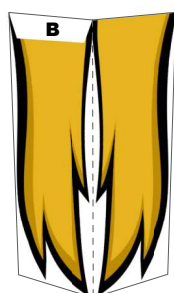
完成図



前髪



横髪(右)



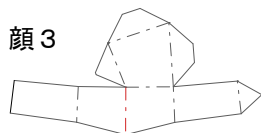
横髪(左)



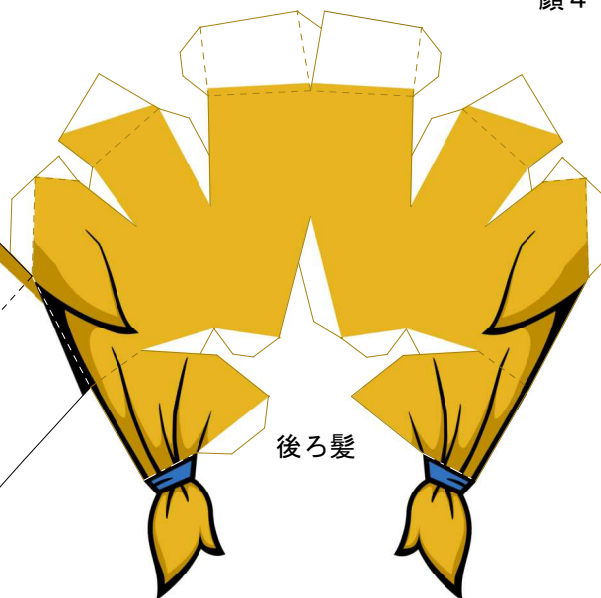
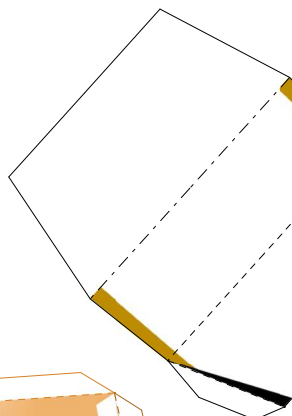
顔4



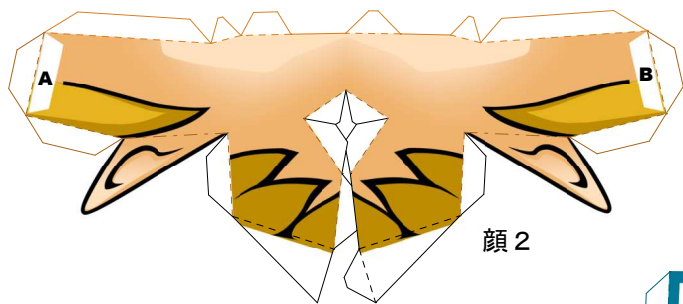
顔1



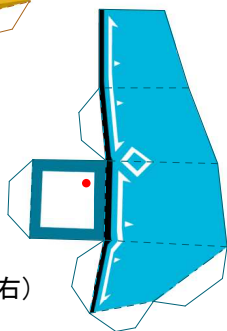
顔3



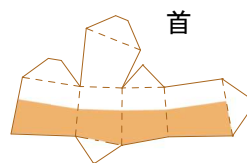
後ろ髪



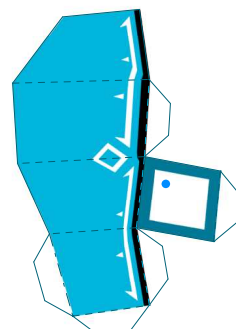
顔2



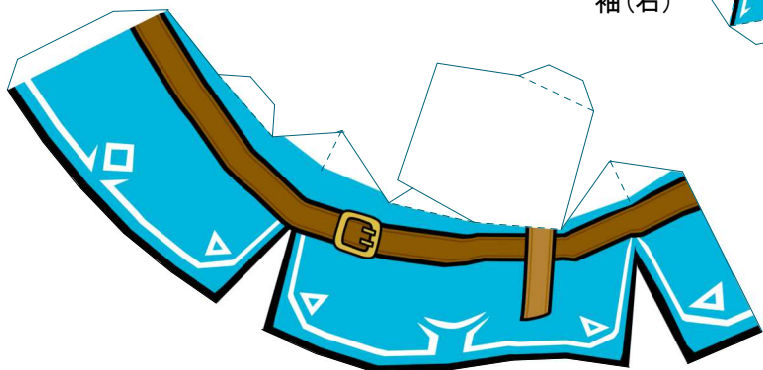
袖(右)



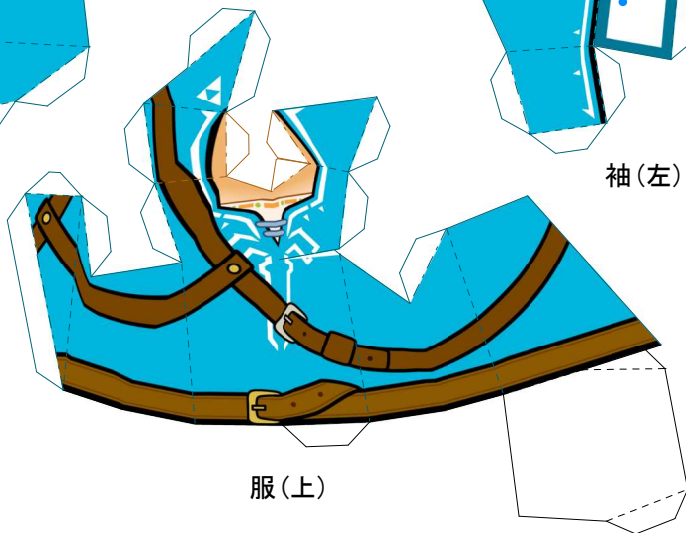
首



袖(左)



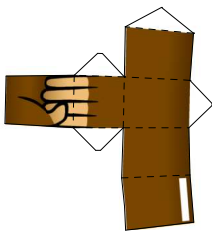
服(下)



服(上)



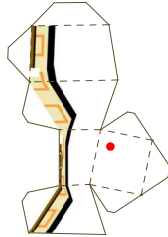
腕当て



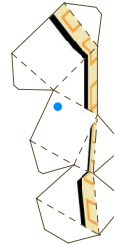
右腕3



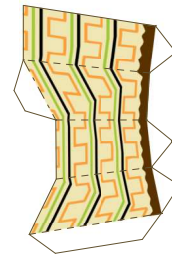
右腕2



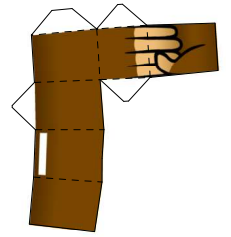
右腕1



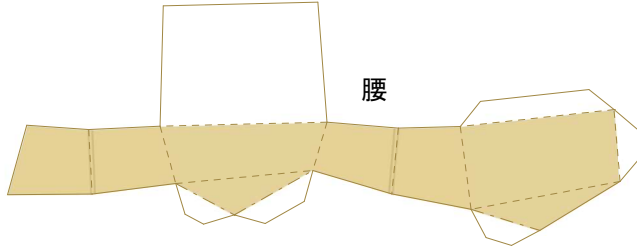
左腕1



左腕2



左腕3



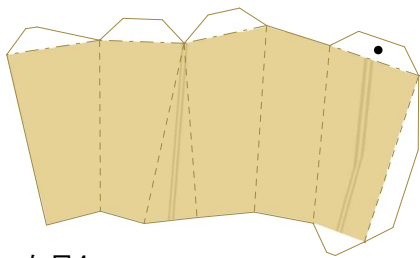
腰



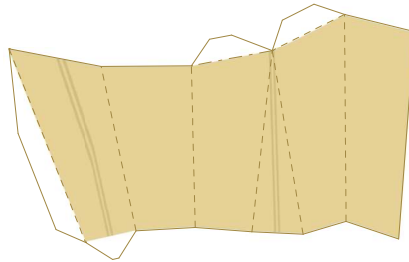
シーカースレート



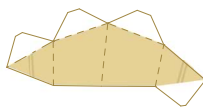
盾の取っ手



右足4



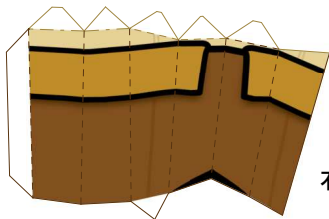
左足4



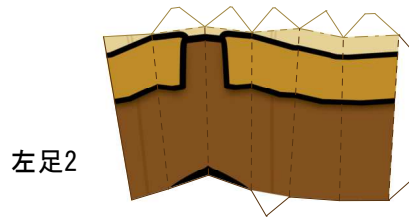
右足3



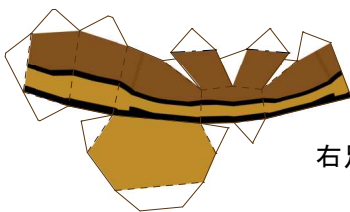
左足3



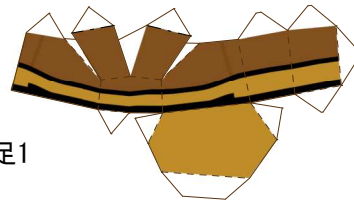
右足2



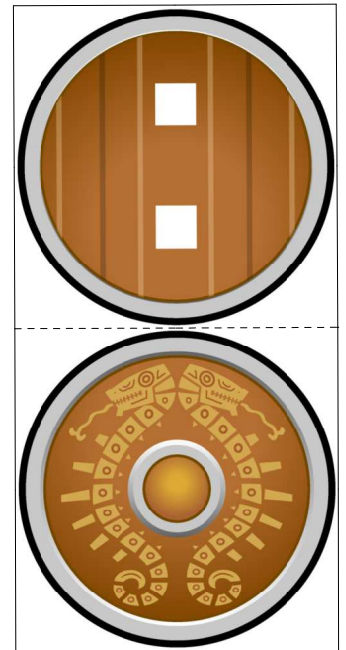
左足2



右足1



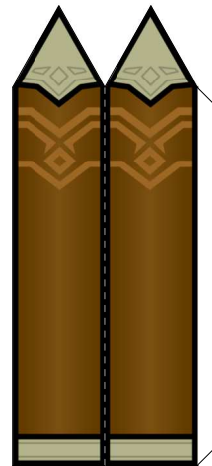
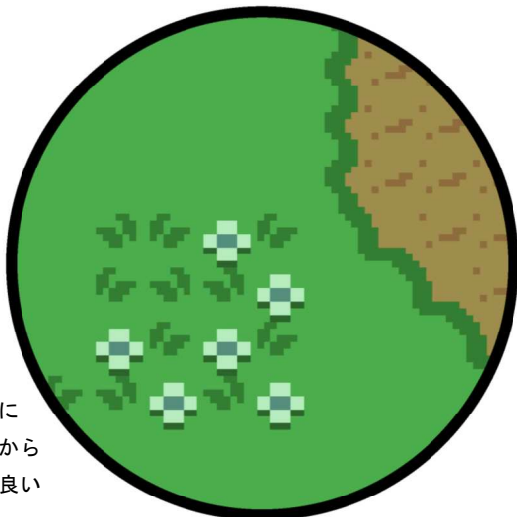
左足1



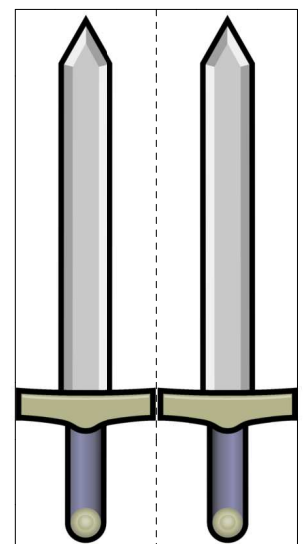
盾

台座

台座は厚紙に
貼りつけてから
切り取ると良い



鞆



剣