

Suede friendship bracelet designs- unique and easy bracelets to make

Interested in suede friendship bracelet designs? Great! This tutorial will tell you simple bracelets to make in this kind. Keep your curiosity and follow our tutorial.

Want a unique bracelet? Most of you may think that uniqueness means kind of sophistication, but actually things are not always like that. One of the suede friendship bracelet designs is cord woven with chain, which is very easy bracelets to make; I bet you will love it!

Materials and tools:



- Golden [double link chains](#)
- Brass hollow beads
- Black suede cords
- Scissors

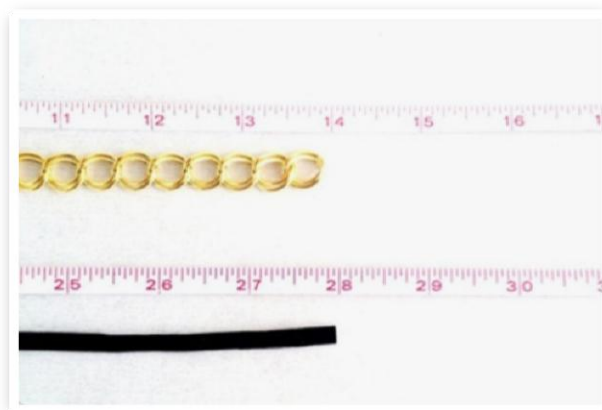


Instructions:

Step 1: snip proper size of chain

1st. cut 36cm length of cable chain (this length is just suitable for most of females to wear twice); Of course the length is decided by the virtual size of your wrist.

2nd, snip 72cm suede cord for next braiding.



Step 2: braid suede onto chain

1st, leave 16cm tail at one end of suede cord and tie an overhand knot over one end of chain;

2nd, weave the cord in and out, through the link spaces.



Step 3: finish the ending part

When reaching the other end of chain, tie another overhand knot over it; and add bead to each tail of cord, with knotting to stabilize the beads.



There are many suede friendship bracelet designs exhibiting on jewelry counters and showing high prices. So it is good and cost-effective to create some by yourself; moreover they are easy bracelets to make.

Many more friendship bracelets tutorials can be found at our web:

<http://www.pandahall.com/learning-center/Friendship-Bracelets/grid-17-p1.html>