

How to Build a Cofferdam Brace

What will you need?

About three 10' - 2x4 pine studs
(new or used)

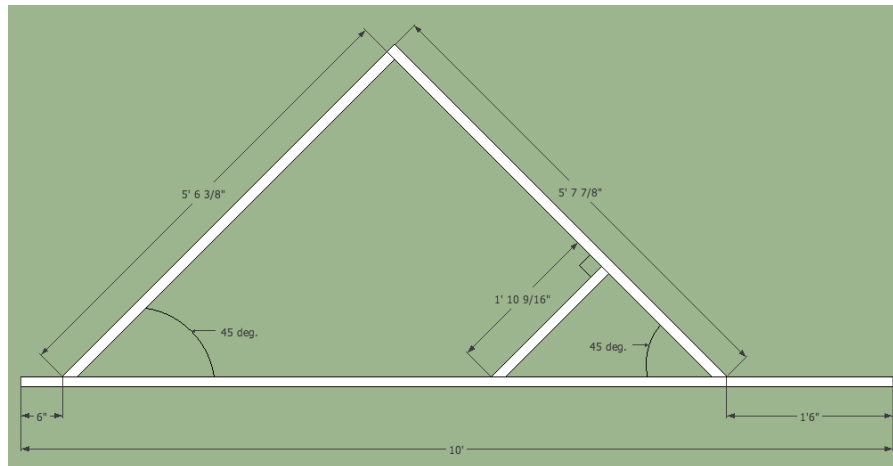
Sixteen 3" - #8 Self Drilling
Screws

Protractor
Tape Measure
Pencil

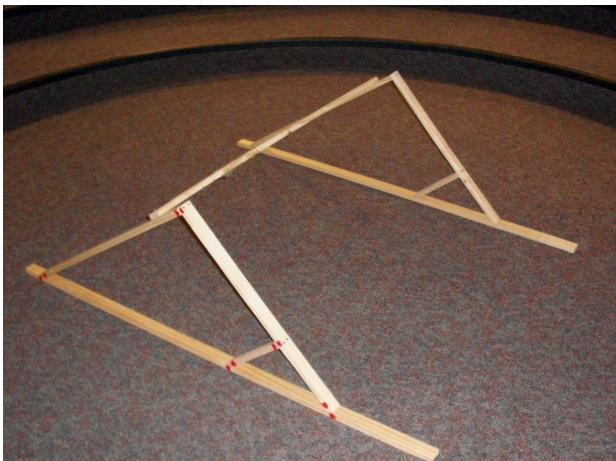
Safety Glasses
Hammer if using nails

Hand Saw with
Mitre Box

Screwdriver or
Drill with driver head



- Step One: Cut the wood to dimensions and angles listed on the drawing .
- Step Two: Screw or nail the pieces together.
- Step Three: Repeat steps one and two and make a second brace.
- Step Four: Connect an 8' beam over the top of both braces as shown in the picture below.
- Step Five: Set the bracing system six feet from each side of the cofferdam.



Completed Brace with Beam



Brace holding Cofferdam