

Face Butterfly Key

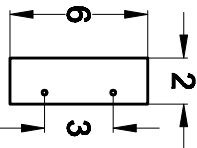
4 Required

Material: 7mm
Light Oak Laminate

Center/Back Butterfly Key

7 Required

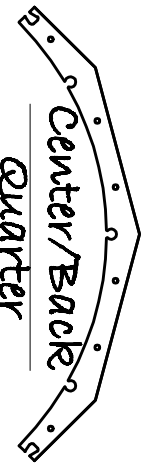
Material: 7mm Laminate



Hinge/Hasp Plate

2 Required

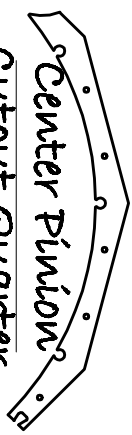
Material: 7mm
DK Hickory Lam



Center/Back Quarter

6 Required

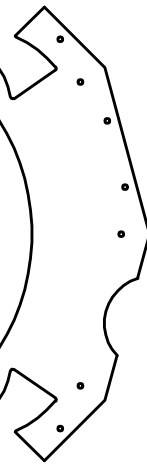
Material: 7mm Laminate



Center Pinion Cutout Quarter

1 Right Thus - 1 Left Rev

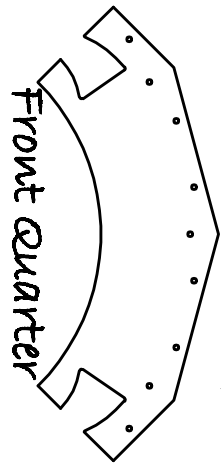
Material: 7mm Laminate



Front Pinion Cutout Quarter

1 Required

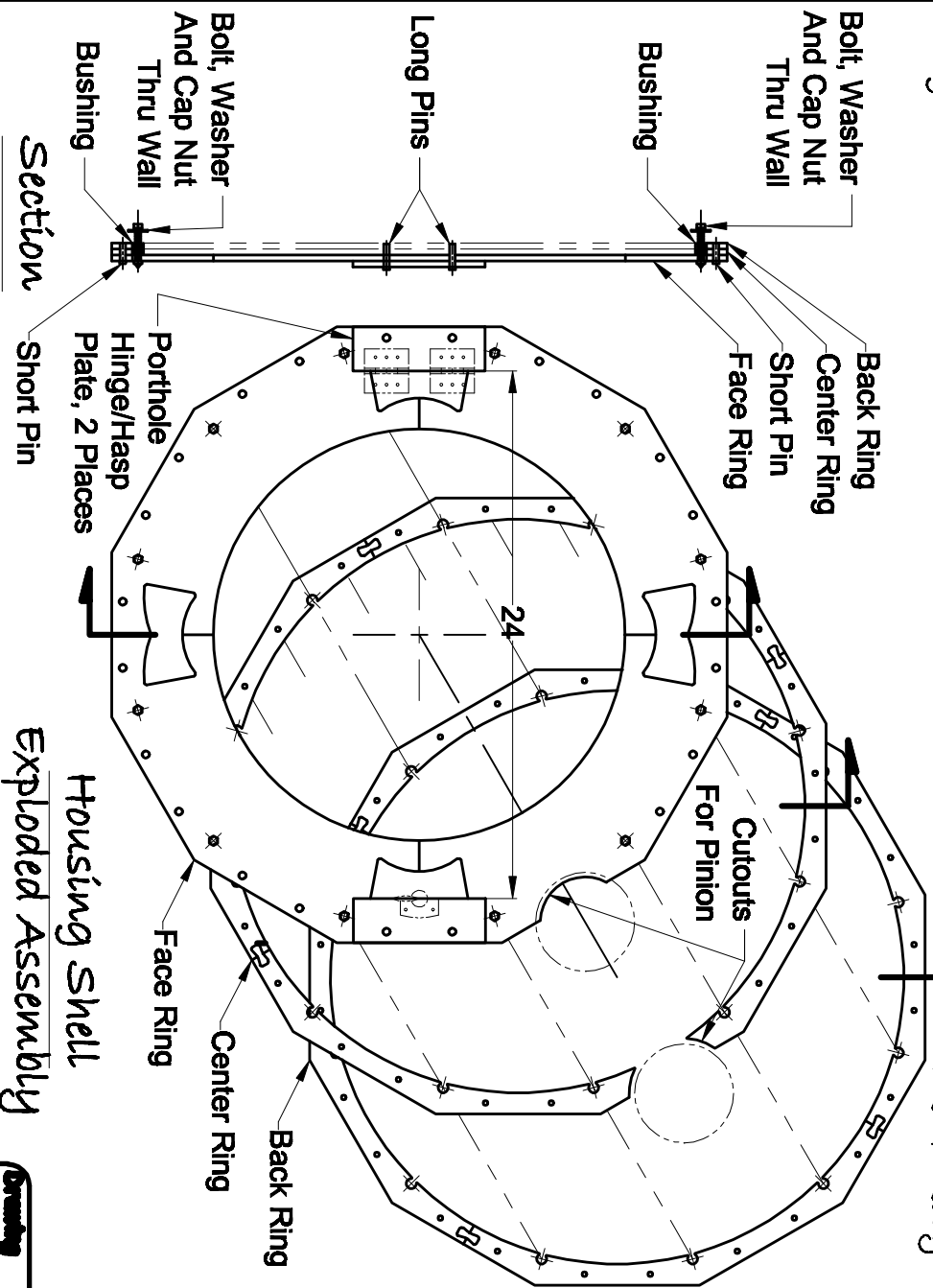
Matl: 7mm DK Hickory Lam



Front Quarter

3 Required

Matl: 7mm DK Hickory Lam



Hardware:

1 Required

Housing Shell Exploded Assembly

- 1/4" Dia. X 1-1/16" Long Wooden Alignment Pin Pegs, 4 Required
- 1/4" Dia. X 13/16" Long Wooden Alignment Pin Pegs, 18 Required
- 1/2" O.D. X 1/4" I.D. X 1/2" L Nylon Bushing, 12 Required
- 1/4-20 X 1-1/2" Long Bolt w/ Brass Acorn Cap Nut, 12 Required

Housing Shell Detail

Project: Mechanical Hts Window With Porthole

Drawn By: WCM | Date: 3-14-14 | Scale: 1/8" = 1" | Sheet: 6 of 7