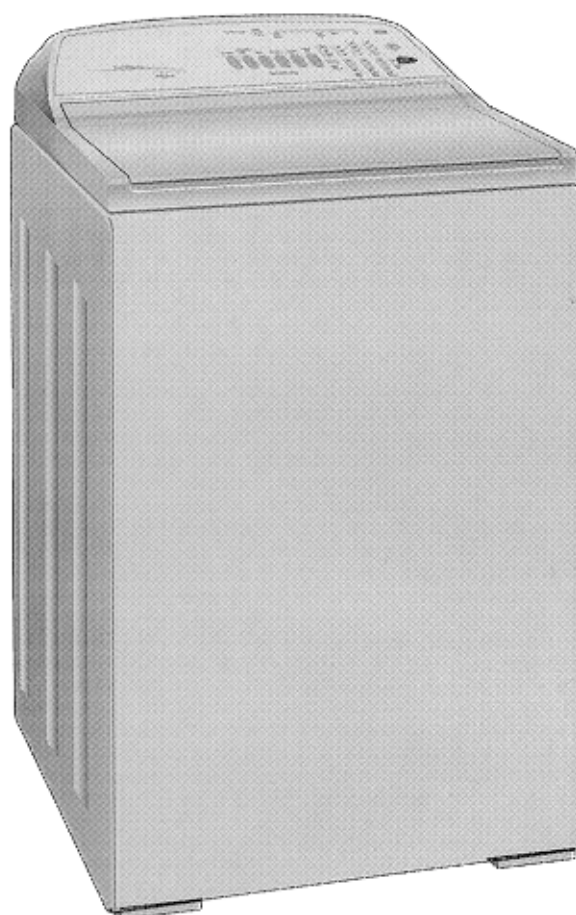


# Smart Drive<sup>®</sup> Electronic Washing Machine



## Models

AW095 GW509 GW609  
GW709 GWC09 GWL09  
GWM09 LW095 MW059



## PRODUCTS

**Brand** Fisher & Paykel, Frigidaire, Kelvinator

**Voltage** 230-240V 50Hz, 220-240V 60Hz\*

Model	Code
AW095	93142
GW509	90145 91145 92165 93145 93165
GW609	90146 91146 92166 93146 93166
GW709	90147 91147 92167 93147 93167
GWC09	94125 94135
GWL09	94127 94247 94457*
GWM09	94126 94246
LW095	90142 91142
MW059	90143 91143 92163 93143 93163
MWC09	94456*

Fisher & Paykel Customer Services  
 PO Box 798  
 19 Enterprise St  
 Cleveland, Queensland 4163  
 Australia  
 Tel: (07) 3826 9122  
 Fax: (07) 3826 9164  
 Email: parts@fp.com.au  
 A.C.N 003 335 171

Fisher & Paykel Ltd  
 Appliance Spare Parts  
 PO Box 14-148, Panmure.  
 80 Springs Rd, East Tamaki  
 New Zealand  
 Tel: (09) 272 0261  
 Fax: (09) 272 0219  
 Email: parts@fp.co.nz

Fisher & Paykel Ltd  
 International Division  
 PO Box 14-917, Panmure.  
 78 Springs Rd, East Tamaki  
 New Zealand  
 Tel: (09) 2730660  
 Fax: (09) 2730580  
 Email: parts.international@fp.co.nz



## CONTENTS

TOP DECK AND ELECTRONICS.....	6
WRAPPER.....	10
AGITATOR AND HOSES.....	12
INNER AND OUTER BOWLS AND PUMP.....	14
MOTOR.....	18
NOTES.....	21

### GUIDE TO USING THIS MANUAL

The model(s) and/or series covered by this manual are listed on the front cover.

The information detailed in this manual is subject to change without notice, the latest version is indicated by the reprint date and replaces any earlier editions.

The front cover picture shows the type of product and may not necessarily be an exact image of the models covered by the manual.

#### Part References

Where a Model is shown, the part is exclusive to the Model(s) stated. Common parts relating to a part reference are applicable to all other Model(s) which use the particular item.

#### Kit Parts

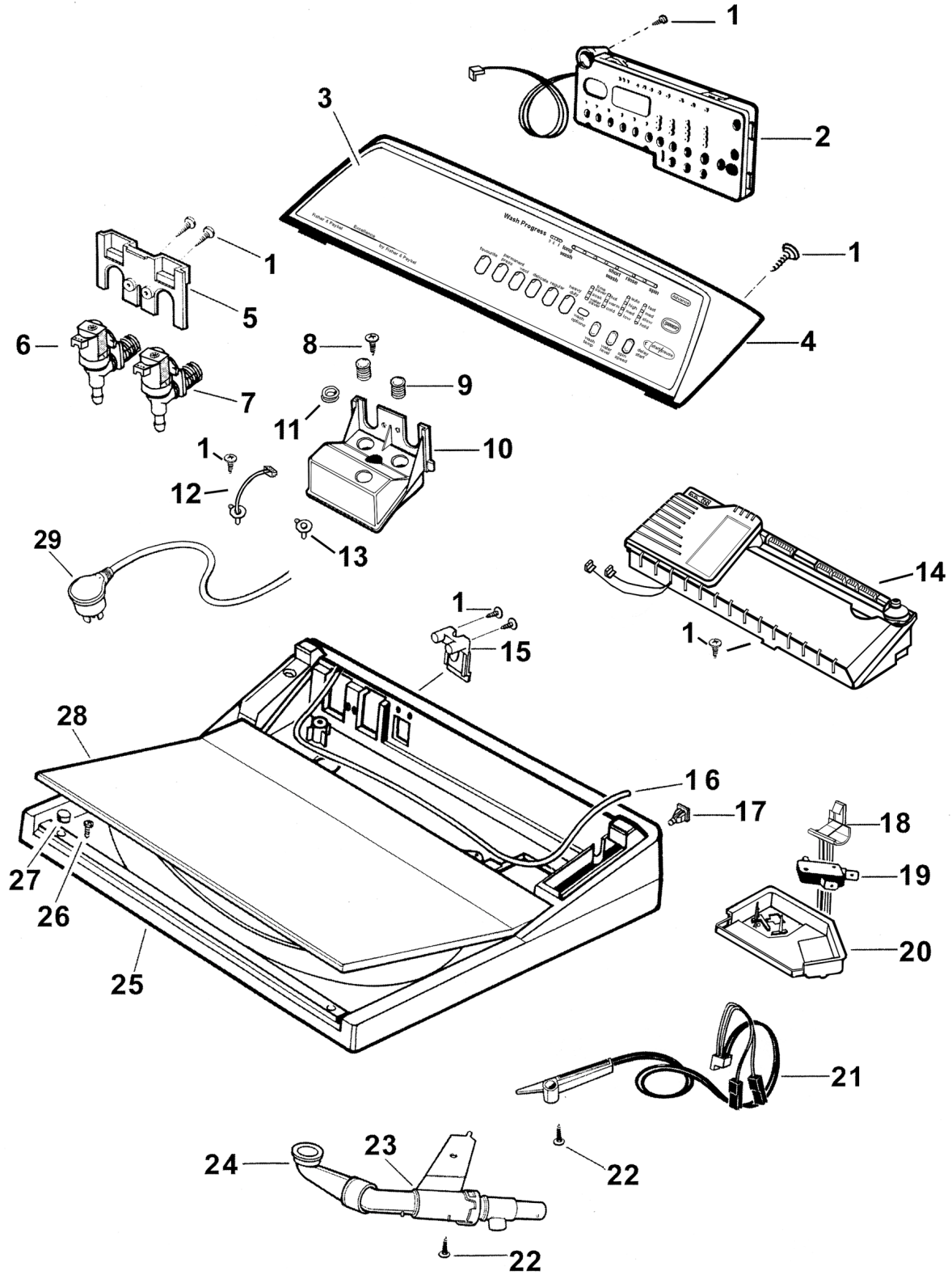
The components shown in *italics* are those parts in the kit which are available also as separate items. In addition, some parts may be supplied with this kit which are not available as separate items and are therefore not listed in this manual.

All details relating to Technical Bulletins or Notes are shown on a dedicated page. The Technical Bulletin Number shown relates to the bulletin version which is produced for New Zealand Service Centres.

#### Parts List Key

NOT USED	As a part, indicates the diagram part reference is not used in this manual.
#	Beside the part number, indicates the part is no longer available.
<i>italics</i>	Kit components shown in <i>italics</i> are also available separately.
*	Indicates a technical bulletin or note exists for the part or part reference.
NI	As a part reference, indicates the part is not illustrated on the diagram.

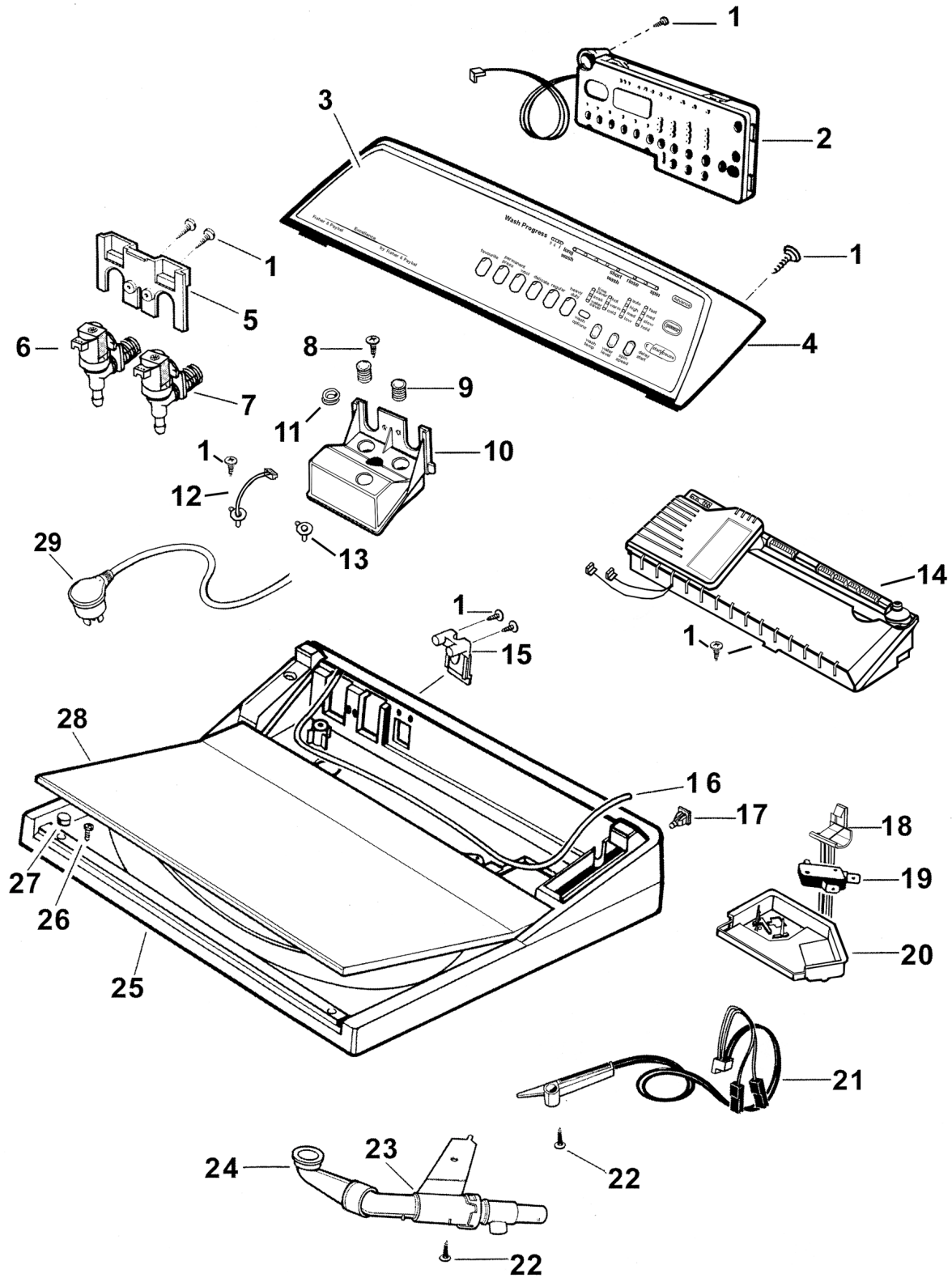
# TOP DECK AND ELECTRONICS



**TOP DECK AND ELECTRONICS**

<b>REF</b>	<b>PART</b>	<b>DESCRIPTION</b>	<b>MODEL</b>
1	611933P	SCREW ST 8X5/8 TA MTS PH H5 X1	
2	426519P	DISPLAY MODULE 230V	
	426517P	DISPLAY MODULE 230V	AW095
	426517P	DISPLAY MODULE 230V	LW095
	426518P	DISPLAY MODULE 230V	MW059
3	426566P	PANEL TOUCH F&P FRESH	AW095
	426573P	PANEL TOUCH F&P EXCELLENCE	GW509
	426988P	PANEL TOUCH GW509 AU NZ F&P WH	GW509
	426574P	PANEL TOUCH GW609U F&P	GW609
	426989P	PANEL TOUCH GW609 AU NZ F&P WH	GW609
	426575P	PANEL TOUCH GW709U F&P	GW709
	426990P	PANEL TOUCH GW709 AU NZ F&P WH	GW709
	426742P	PANEL TOUCH GWC09 SANDSTONE	GWC09
	426578P	PANEL TOUCH GWL09 F&P	GWL09
	426583P	PANEL TOUCH GWM09U F&P	GWM09
	426561P	PANEL TOUCH LW095K KELVINATOR	LW095
	426572P	PANEL TOUCH MW059U F&P	MW059
	426987P	PANEL TOUCH MW059 AU NZ F&P WH	MW059
	420259	PANEL TOUCH MWC09PH FP	MWC09
4	426053P	CONSOLE SD 503 WHITE PKD	
	478015	CONSOLE WHITE	AW095
	426054P	CONSOLE WHITE	GW609
	426055P	CONSOLE WHITE 703 SD PKD	GW709
	426503P	CONSOLE 500 SANDSTONE PKD	GWC09
5	425339	BRACKET VALVE SD2	
6	426560	VALVE INLET PROPORTIONAL 24V	GW509
	426560	VALVE INLET PROPORTIONAL 24V	GW609
	426560	VALVE INLET PROPORTIONAL 24V	GW709
7	426559	VALVE INLET DIGITAL 24V 10L	
8	611986P	SCREW ST 8X20MM HILO PAN PH X1	
9	425251	SEAL INLET VALVE	
10	426464	CHAMBER INLET ASSY SD200	
11	426752	SEAL THERMISTOR SS	
12	479164P	KIT THERMISTOR SD200 4.0	GW509
	479164P	KIT THERMISTOR SD200 4.0	GW609
	479164P	KIT THERMISTOR SD200 4.0	GW709

# TOP DECK AND ELECTRONICS

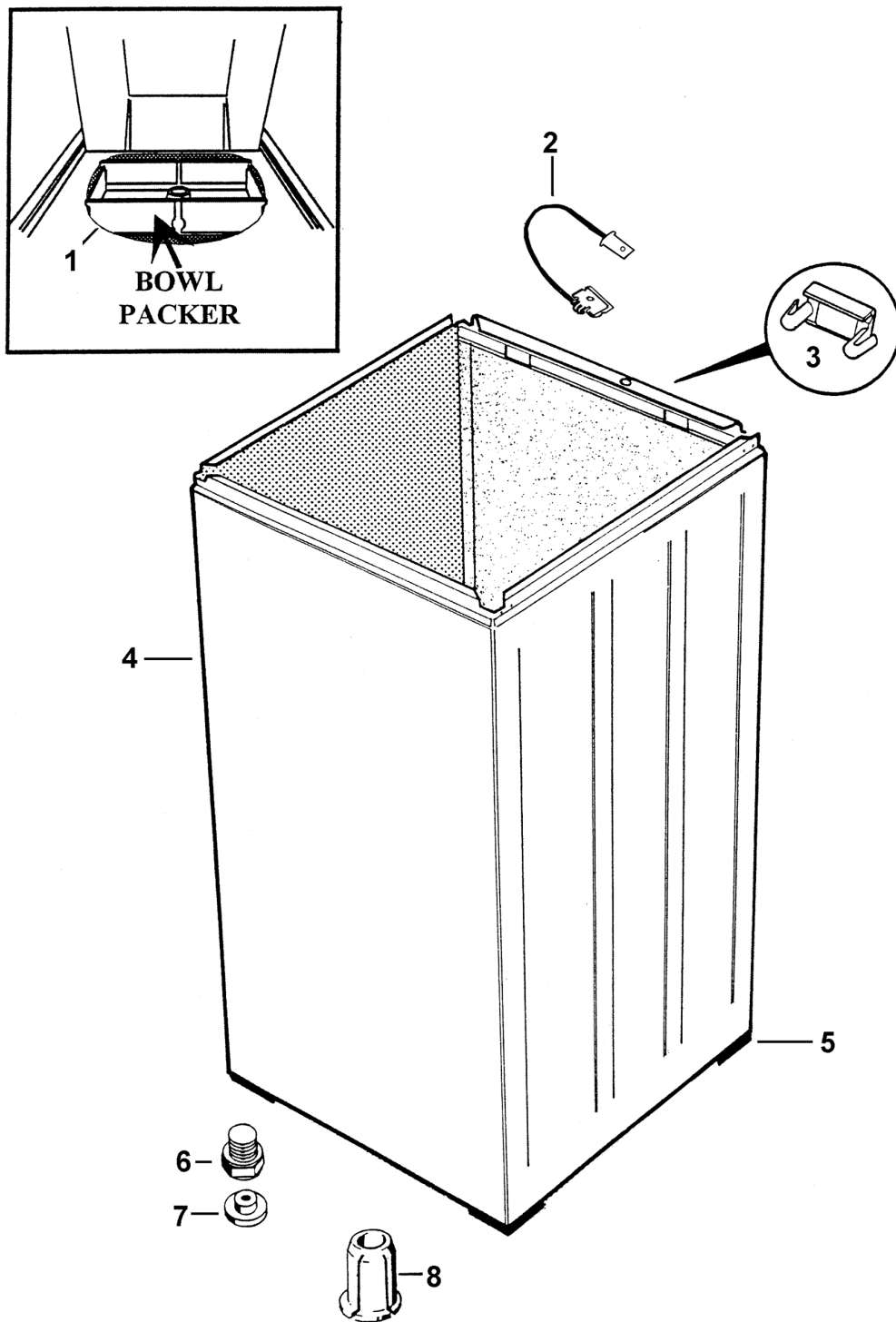




**TOP DECK AND ELECTRONICS**

<b>REF</b>	<b>PART</b>	<b>DESCRIPTION</b>	<b>MODEL</b>
13	426728#	BLANK THERMISTOR	AW095
	426728#	BLANK THERMISTOR	LW095
	426728#	BLANK THERMISTOR	MW059
14	* 426520AP	MOTOR CONTROLLER 230V CODE A	
	* 426520BP	MOTOR CONTROLLER 230V CODE B	
	* 426520EP	CONTROLLER SD200 230V EP SVC	
	426974P	CONTROLLER MOTOR M/G/IW PKD	
15	426440	CLAMP MAINS HARNESS 220/240	
16	426273	GASKET CONSOLE FOAM CUT	
17	422402P	NUT SNAP IN SPIRE P0071/05/ X1	
18	425686	LEVER BALANCE SWITCH	
19	426597	MICROSWITCH 4.8TABS OE21-94A0	
20	425772	BRACKET OOB SD2	
21	426515	HARNESS REED SW/OOB SD200	
22	611985P	SCREW ST 8X1/2 TA MSH PH SS PK	
23	426649	NOZZLE ASSY SD200	
	425335	NOZZLE INLET SD2	AW095
	425335	NOZZLE INLET SD2	LW095
	425335	NOZZLE INLET SD2	MW059
24	425974	ELBOW NOZZLE SD3	
25	426544P	TOP DECK ASSY 500 WHITE PACKED	
	426545P	TOP DECK ASSY 600 WHITE PKD	GW609
	426546P	TOP DECK WHITE 7 ASSY PKD	GW709
	426499P	TOP DECK 500 SANDSTONE PKD	GW09
26	611923P	SCREW ST 8X5/8 TAB MSH PH X10	
27	425413	BUFFER LID WHITE	
	426389	BUFFER LID SANDSTONE	
28	425860P	LID ASSEMBLY 500 RSW WHITE PKD	
	426711P	LID ASSEMBLY 6 WHITE UL PKD	GW609
	426712P	LID ASSY WHITE 7 UL PKD	GW709
29	426557	CORD SET SD200	
NI	* 502220	KIT LEVER & BRACKET OOB	
		<i>425686 LEVER BALANCE SWITCH</i>	
		<i>425772 BRACKET OOB SD2</i>	
NI	388491	CAP VALVE	

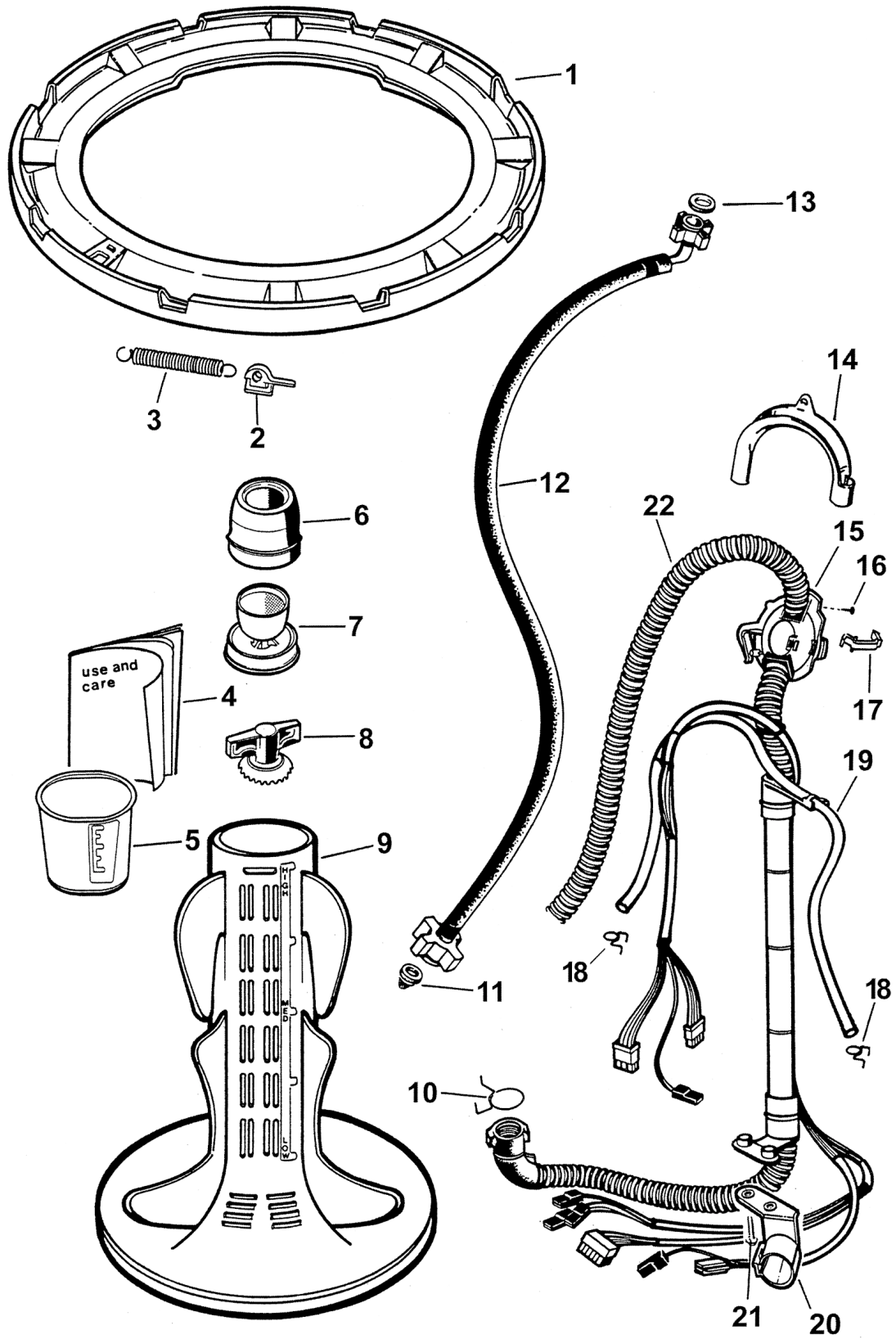
# WRAPPER



**WRAPPER**

<b>REF</b>	<b>PART</b>	<b>DESCRIPTION</b>	<b>MODEL</b>
1	426281	PACKER BOWL 5 SERIES (VISY)	
	426698	PACKER BOWL 6	GW609
	426283	PACKER BOWL 7 SERIES (VISY)	GW709
2	426512	WIRE CABINET EARTH SD200	
3	426058	COVER EARTH CLIP	
4	426661P	WRAPPER ASSY 5 PKD	
		<i>426153 FOOT LEVELLING</i>	
		<i>426512 WIRE CABINET EARTH SD200</i>	
		<i>426657 CORNER CABINET BOTTOM</i>	
	426662P	WRAPPER ASSY 6 PKD	GW609
		<i>426153 FOOT LEVELLING</i>	
		<i>426512 WIRE CABINET EARTH SD200</i>	
		<i>426657 CORNER CABINET BOTTOM</i>	
	426663P	WRAPPER ASSY 7 PKD	GW709
		<i>426058 COVER EARTH CLIP</i>	
		<i>426153 FOOT LEVELLING</i>	
		<i>426621 WIRE CABINET EARTH CLIP</i>	
		<i>426657 CORNER CABINET BOTTOM</i>	
5	426366	CORNER CABINET BOTTOM	
	426657	CORNER CABINET BOTTOM	
6	426153	FOOT LEVELLING	
7	426154	INSERT FOOT	
8	425095	NUT TRANSIT	

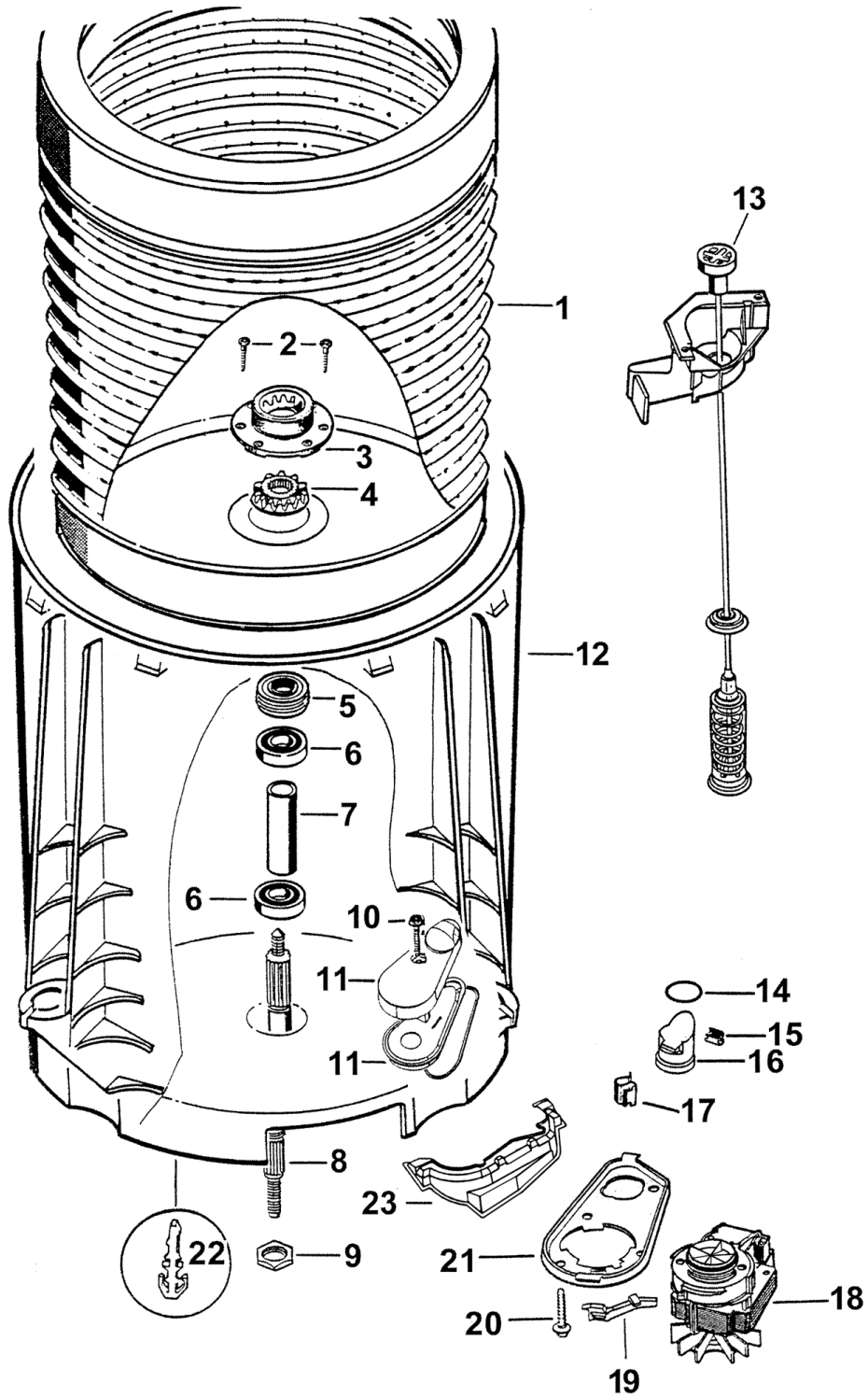
# AGITATOR AND HOSES



**AGITATOR AND HOSES**

<b>REF</b>	<b>PART</b>	<b>DESCRIPTION</b>	<b>MODEL</b>
1	426694	NECK RING ASSY 500 LARGE ID	
	* 426362	NECK RING ASSEMBLY 6 SERIES	GW609
	* 426363	NECK RING ASSEMBLY 7 SERIES	GW709
2	425531	CLIP BIAS SPRING	
3	425173	SPRING BIAS	
4	426729	BOOK USE & CARE AUST & NZ SD9	
	426991	BOOK USE & CARE L/M/GW09 AU/NZ	
5	425166	CUP DETERGENT	
6	426893	DISPENSER TOP WHITE	
7	426894	DISPENSER BOTTOM IW	
8	425059	NUT AGITATOR	
9	425025	AGITATOR	
10	422500	CLAMP HOSE 031.5	
11	422753	FILTER INLET	
12	422680	HOSE INLET LONG (2M)	
	* 426123	HOSE INLET ASSY ID 12MM (ZM520)	
	426541	HOSE INLET ASSY	
	426925	HOSE INLET ASSY MIFLEX	
		<i>420016 FILTER</i>	
		<i>420017 WASHER</i>	
13	400704	CONNECTOR SEAL	
14	422808	GUIDE OUTLET HOSE	
15	426455	FIXTURE DRAIN HOSE	
16	611933P	SCREW ST 8X5/8 TA MTS PH H5 X1	
17	425487	CLIP FIXTURE DRAIN HOSE	
18	425611	CLAMP HOSE 08.5 TALL GRIP	
19	425299	TUBE PRESSURE SENSOR SD2	
20	425503	BRACKET DRAIN HOSE	
21	425150P	SCREW ST 1/4 X 1" PLASTITE X10	
22	426543P	HOSE DRAIN/WIRING ASSY SD200 P	
NI	425627P	HOSE DRAIN EXTENSION	

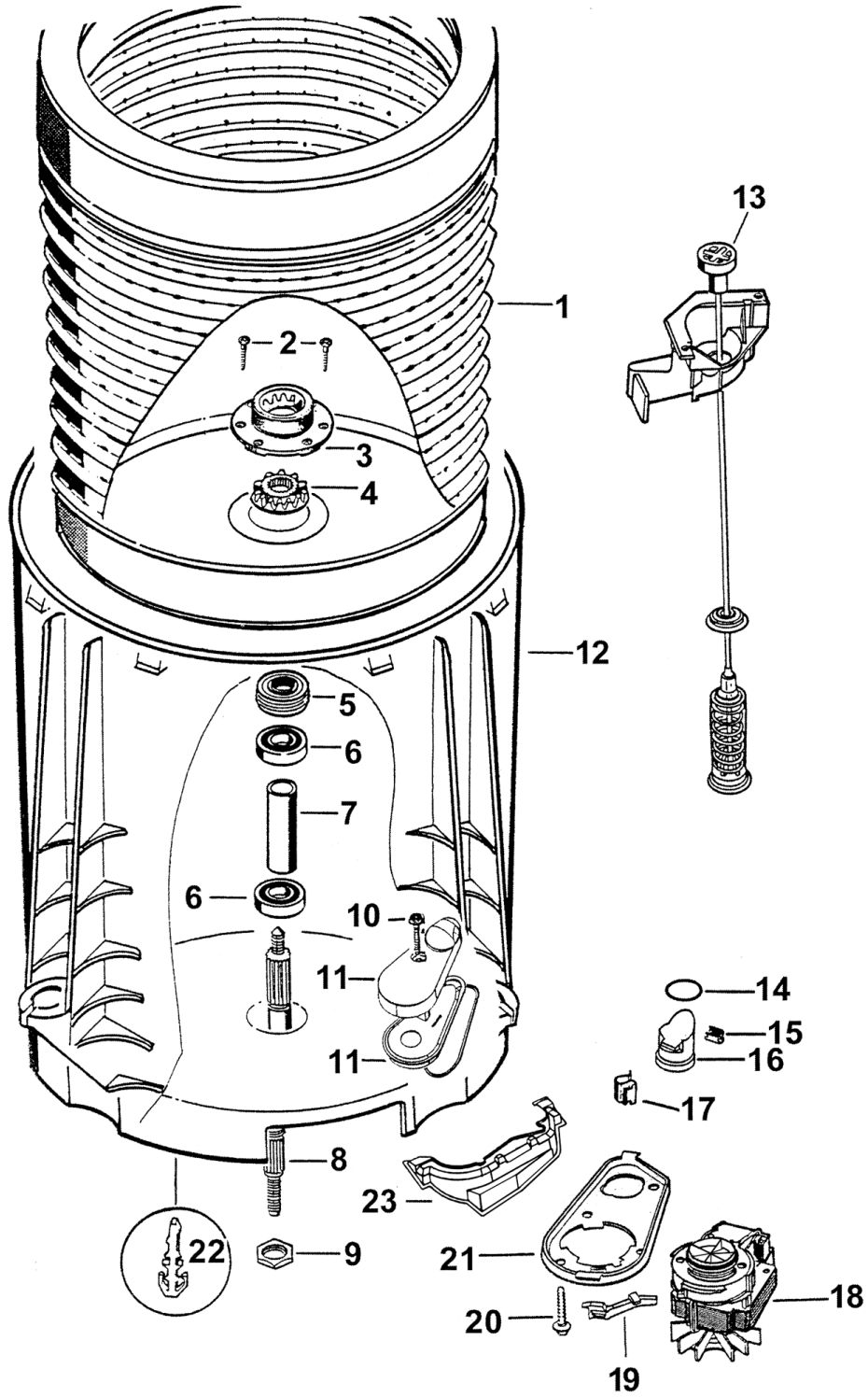
# INNER AND OUTER BOWLS AND PUMP



**INNER AND OUTER BOWLS AND PUMP**

<b>REF</b>	<b>PART</b>	<b>DESCRIPTION</b>	<b>MODEL</b>
1	426097P	BOWL INNER 500 ASSY PKD <i>425080 SPLINE DRIVEN</i> <i>425131P SCREW CLUTCH X10 PKD</i> <i>425596 SPLINE DRIVE ASSY</i>	
	426098P	BOWL INNER 600 ASSY PKD <i>425080 SPLINE DRIVEN</i> <i>425131P SCREW CLUTCH X10 PKD</i> <i>425596 SPLINE DRIVE ASSY</i>	GW609
	426099P	BOWL INNER 700 ASSY PKD <i>425080 SPLINE DRIVEN</i> <i>425131P SCREW CLUTCH X10 PKD</i> <i>425596 SPLINE DRIVE ASSY</i>	GW709
2	425131P	SCREW CLUTCH X10 PKD	
3	425080	SPLINE DRIVEN	
4	425596	SPLINE DRIVE ASSY	
5	425009P	LIPSEAL PKD	
6	425006P	BEARING 6005LLU	
7	425007	SPACER BEARING	
8	425013	SHAFT (ZP5294)	
9	425171	NUT BEARING	
10	425162P	SCREW COVER X10 PKD	
11	* 479188P	KIT DRAIN CAP HOOD & IMPELLOR <i>425115 SEAL PUMP CAP</i> <i>426359 IMPELLER VORTEX ASSY</i> <i>426939 CAP PUMP RIBBED</i> <i>426940 HOOD PUMP</i>	
12	425923P	BOWL OUTER ASSY 500 <i>425006P BEARING 6005LLU</i> <i>425007 SPACER BEARING</i> <i>425115 SEAL PUMP CAP</i> <i>426939 CAP PUMP RIBBED</i> <i>426940 HOOD PUMP</i>	
	425924P	BOWL OUTER ASSY 600 <i>425006P BEARING 6005LLU</i> <i>425007 SPACER BEARING</i> <i>425115 SEAL PUMP CAP</i> <i>426939 CAP PUMP RIBBED</i>	GW609

# INNER AND OUTER BOWLS AND PUMP

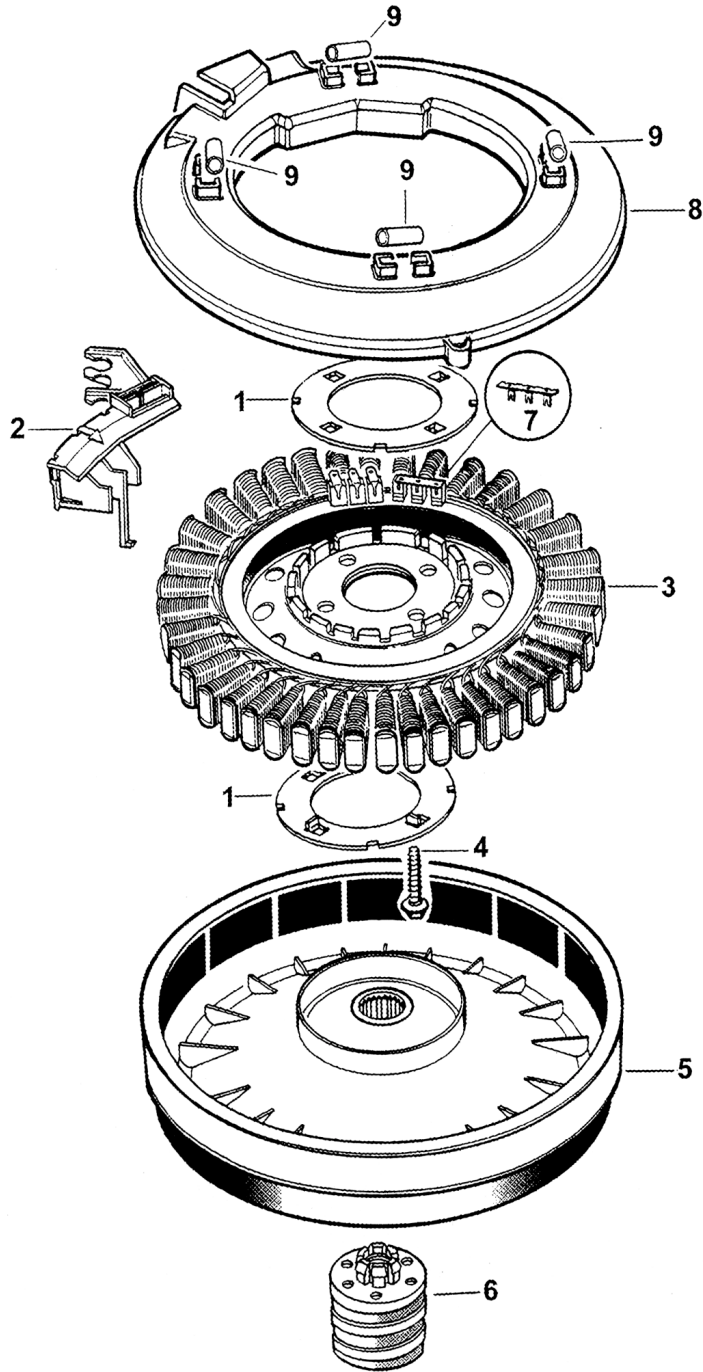




**INNER AND OUTER BOWLS AND PUMP**

<b>REF</b>	<b>PART</b>	<b>DESCRIPTION</b>	<b>MODEL</b>
12		426940 HOOD PUMP	
	425925P	BOWL OUTER ASSY 700	GW709
		425006P BEARING 6005LLU	
		425007 SPACER BEARING	
		425115 SEAL PUMP CAP	
		426939 CAP PUMP RIBBED	
		426940 HOOD PUMP	
13	425779	SUSPENSION ASSY	
14	425149	SEAL O RING PRESSURE CHAMBER	
15	613710	CLIP EDGE	
16	425097	PLUG PRESSURE CHAMBER	
17	613709	CLIP PIPE UNITED CARR FT19280-	
18	426956P	PUMP DRAIN SD09 CHAMFERED PKD	
19	425128	CLIP PUMP RETAINING	
20	425150P	SCREW ST 1/4 X 1" PLASTITE X10	
21	425028	BRACKET PUMP	
22	472867	CLIP WIRING OUTER BOWL	
23	* 426292	SHIELD PUMP SERVICE	
NI	502009	KIT SERVICE TOOL	

# MOTOR



**MOTOR**

<b>REF</b>	<b>PART</b>	<b>DESCRIPTION</b>	<b>MODEL</b>
1	426174	CLAMP PLATE STATOR LANCED	
2	* 425221P	SENSOR ROTOR POSITION	
		<i>472867 CLIP WIRING OUTER BOWL</i>	
3	426454P	STATOR SD200 PKD	
4	426835P	SCREW STATOR PKT 10	
5	425620P	ROTOR FERRITE PKD	
6	425016	NUT ROTOR	
7	* 425104	BRIDGE TERMINAL	
8	NOT USED		
9	NOT USED		



## NOTES

### TOP DECK AND ELECTRONICS

#### Notes

14	The following product codes use 426520EP, 94125, 94135,94246,94126,94247,94127,94457.
426520AP	The following product codes use 426520AP, 90145,91145, 90146, 91146, 90147, 91147, 90142, 91142, 91043, 91143.
426520BP	The following product codes use 426520BP: 93142, 93143, 93145, 93146, 93147
426520EP	the following product codes use 426520EP, 94125, 94135,94246,94126,94247,94127,94457.

#### Technical Bulletins

502220	WM70
--------	------

### AGITATOR AND HOSES

#### Technical Bulletins

426123	WM78
426362	WM82
426363	WM82

### INNER AND OUTER BOWLS AND PUMP

#### Technical Bulletins

426292	WM81
479188P	WM0013

### MOTOR

#### Technical Bulletins

425104	WM81
425221P	WM71