

Prototype

For the Medication Reminder App

Once people download and open the app, it will show this sign up page.

The users can sign up with their emails, with Google, or with Apple.

The logo

Medication Reminder App



Create an account

Enter your email to sign up for this app

Continue

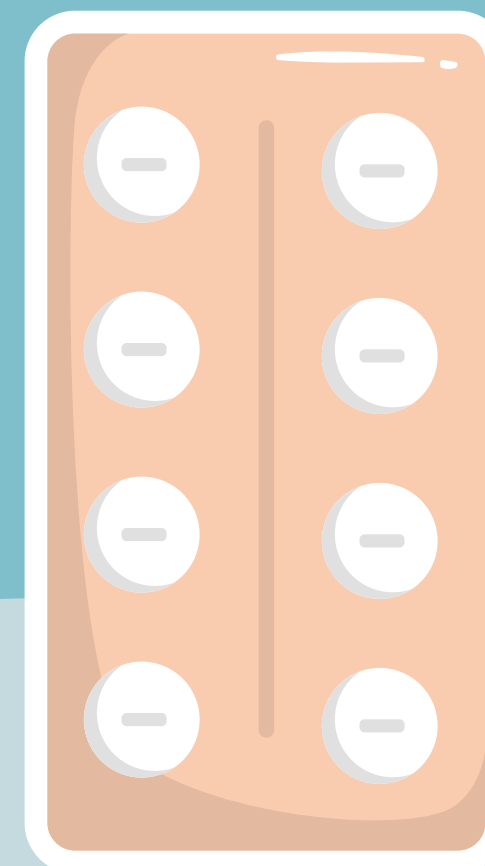
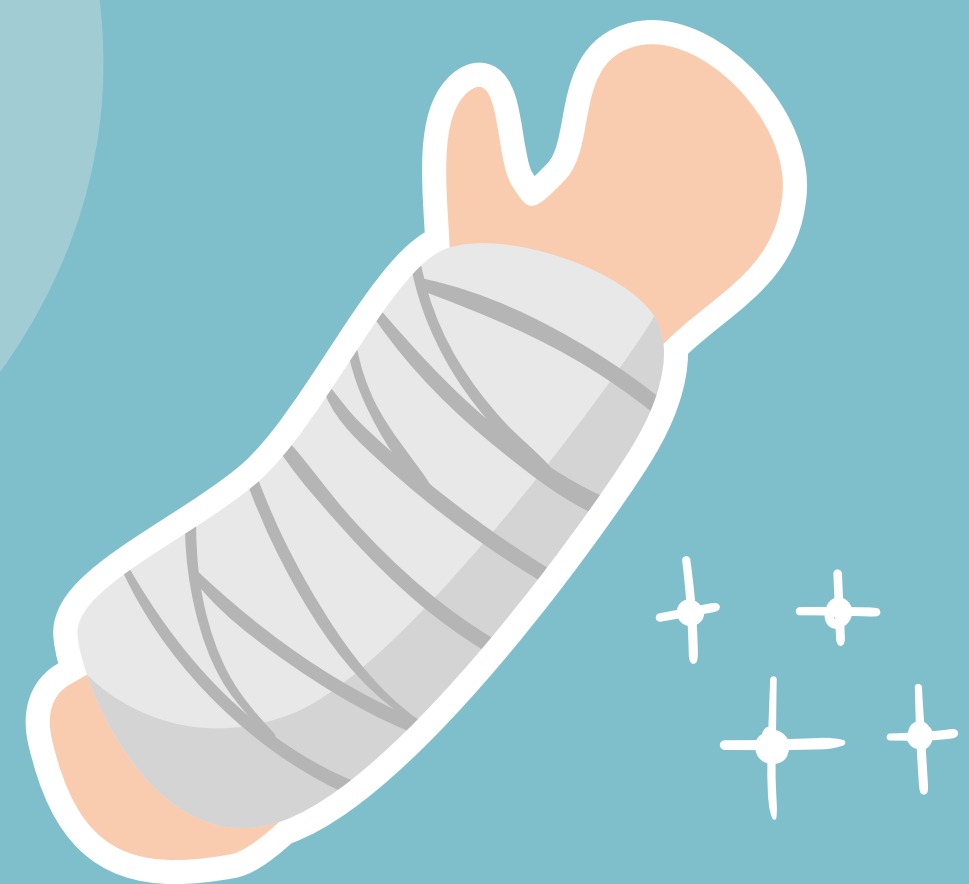
or

 Continue with Google

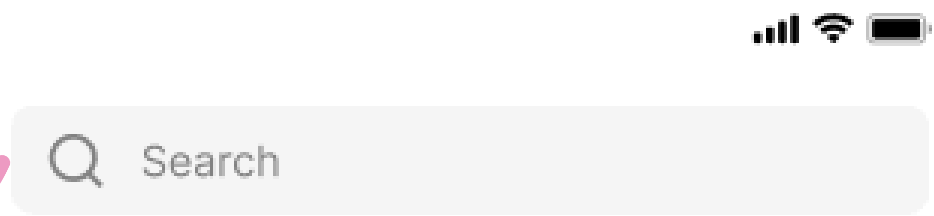
 Continue with Apple

By clicking continue, you agree to our [Terms of Service](#) and [Privacy Policy](#)

The name of the App



You can use the search function to speed up and make the app easier to navigate



If you receive any new messages, a notification will pop up to remind you



NEXT DOSE
Amoxicillin — in 15 minutes



View full medication schedule

If you want to check your full medication plan, you can click this button and it will take you to the Calendar Page



After signing up, you will be taken to the Home Page, this is where you can look at your next dose.

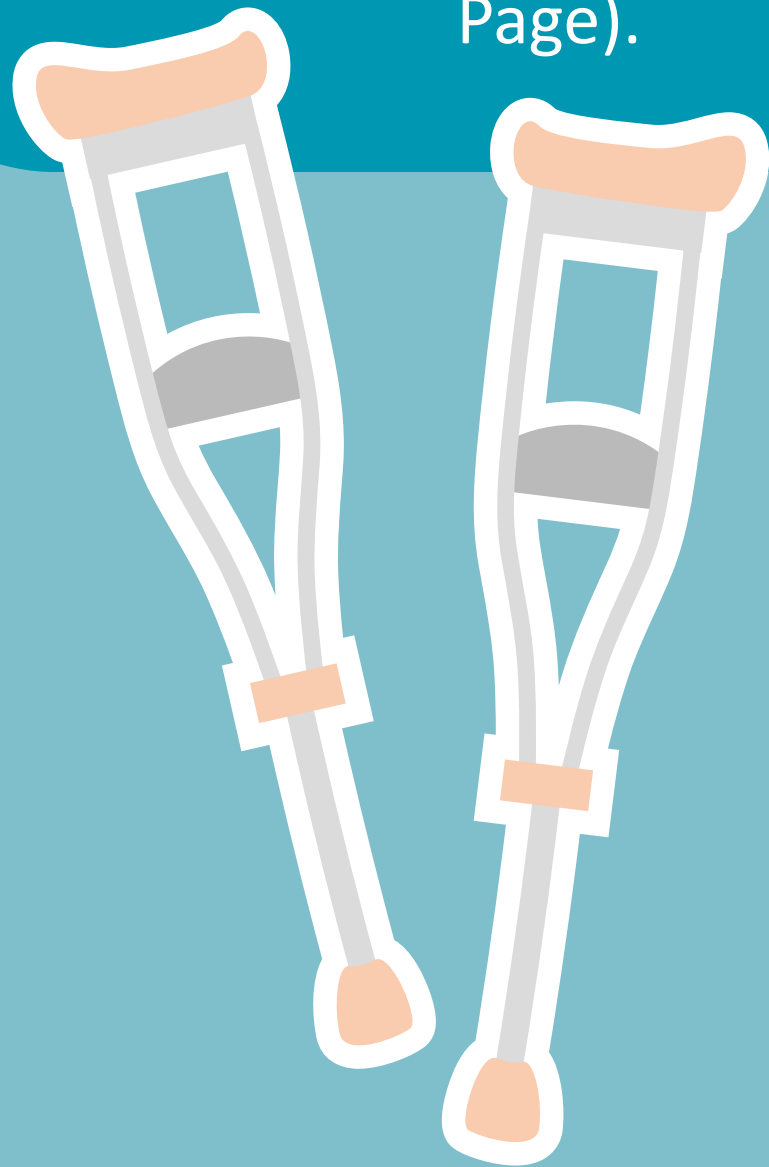
For how many minutes later you should take the medication



Click on one of these to go to other pages

The medication you should take

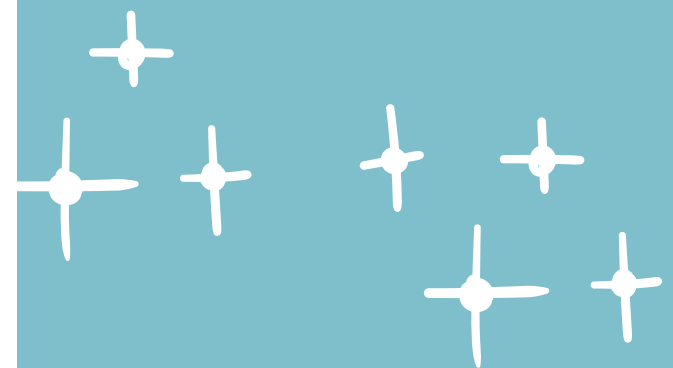
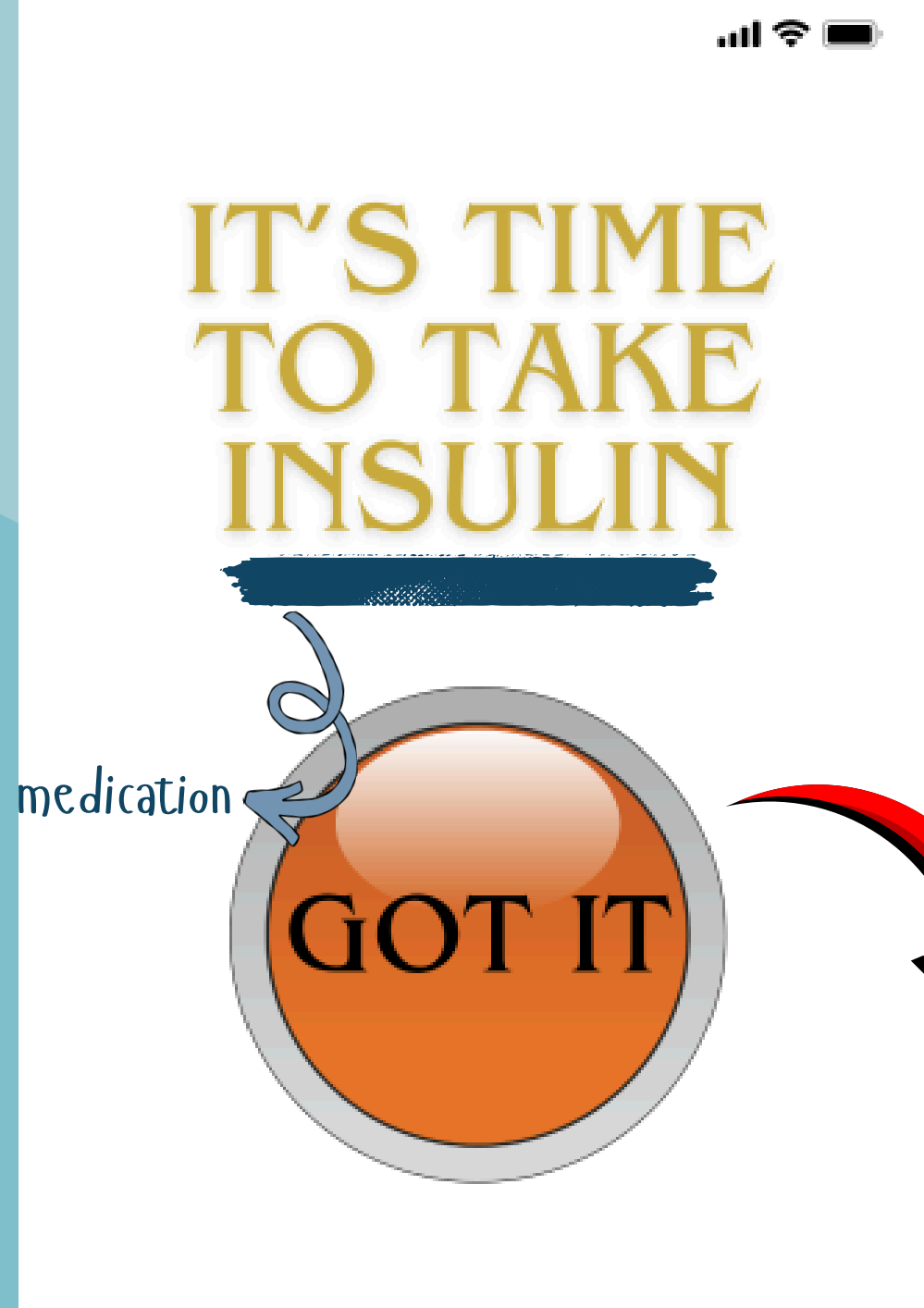
When it's time for your medication, this screen will pop up automatically, along with the alert sound (but that's something you can change in the Settings Page).



You can exit by clicking this button to show that you have been reminded successfully



Although all medication is important to take, some are especially urgent, if you don't take it on time, it will put you at risk. So if the medication should be taken immediately, the text will be red and will play a different sound for you to differentiate.



You can exit by clicking this button to show that you have been reminded successfully





Search

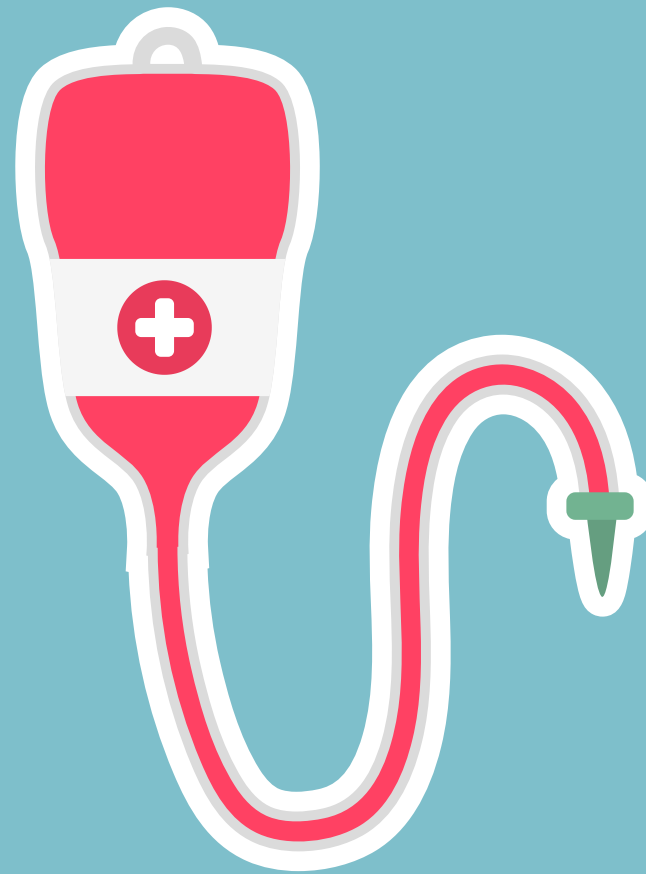
This calendar is for the full year

2025 MEDICATION CALENDAR

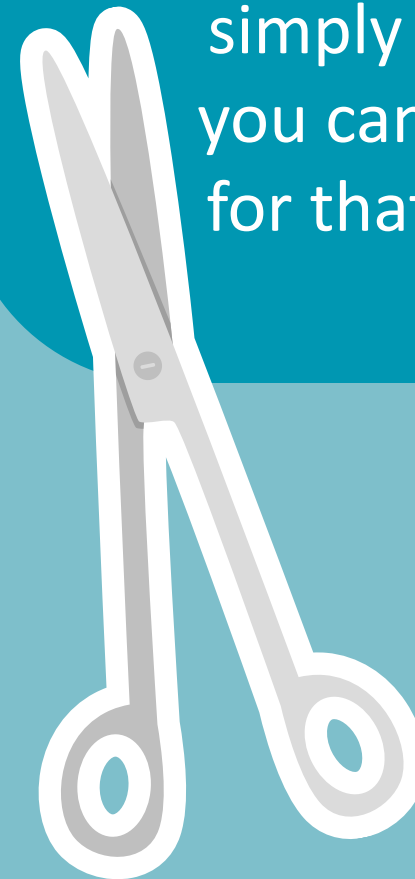
JANUARY	FEBRUARY	MARCH
S M T W T F S	S M T W T F S	S M T W T F S
1 2 3	1 2 3 4 5 6 7	1 2 3 4 5 6 7
4 5 6 7 8 9 10	8 9 10 11 12 13 14	8 9 10 11 12 13 14
11 12 13 14 15 16 17	15 16 17 18 19 20 21	15 16 17 18 19 20 21
18 19 20 21 22 23 24	22 23 24 25 26 27 28	22 23 24 25 26 27 28
25 26 27 28 29 30 31		29 30 31
APRIL	MAY	JUNE
S M T W T F S	S M T W T F S	S M T W T F S
1 2 3 4	1 2	1 2 3 4 5 6
5 6 7 8 9 10 11	3 4 5 6 7 8 9	7 8 9 10 11 12 13
12 13 14 15 16 17 18	10 11 12 13 14 15 16	14 15 16 17 18 19 20
19 20 21 22 23 24 25	17 18 19 20 21 22 23	21 22 23 24 25 26 27
26 27 28 29 30	24 25 26 27 28 29 30	28 29 30
JULY	AUGUST	SEPTEMBER
S M T W T F S	S M T W T F S	S M T W T F S
1 2 3 4		1 2 3 4 5
5 6 7 8 9 10 11	2 3 4 5 6 7 8	6 7 8 9 10 11 12
12 13 14 15 16 17 18	9 10 11 12 13 14 15	13 14 15 16 17 18 19
19 20 21 22 23 24 25	16 17 18 19 20 21 22	20 21 22 23 24 25 26
26 27 28 29 30 31	23 24 25 26 27 28 29	27 28 29 30
OCTOBER	NOVEMBER	DECEMBER
S M T W T F S	S M T W T F S	S M T W T F S
1 2 3	1 2 3 4 5 6 7	1 2 3 4 5
4 5 6 7 8 9 10	8 9 10 11 12 13 14	6 7 8 9 10 11 12
11 12 13 14 15 16 17	15 16 17 18 19 20 21	13 14 15 16 17 18 19
18 19 20 21 22 23 24	22 23 24 25 26 27 28	20 21 22 23 24 25 26
25 26 27 28 29 30 31	29 30	27 28 29 30 31

You can click on a month to check your schedule

This is what appears when you click on the Calendar Page



This is the general medication calendar with all days in a year. If you want to see your medication schedule for a specific month, then you just need to simply click on that month, and then you can see your full medication plan for that month (as shown in the next slide).

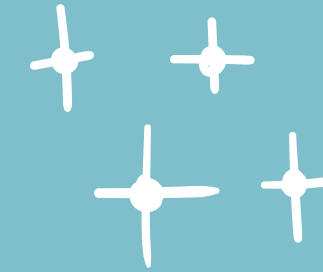




The year and the month



You can go back to the general medication calendar by clicking this



2025

November

MON	TUE	WED	THU	FRI	SAT	SUN
					1 Lisinopril morning	2 Metformin with breakfast
3 Atorvastatin night	4 Lisinopril morning	5 Metformin with breakfast	6 Atorvastatin night	7 Lisinopril morning	8 Metformin with breakfast	9 Atorvastatin night
10 Lisinopril morning	11 Metformin with breakfast	12 Atorvastatin night	13 Lisinopril morning	14 Metformin with breakfast	15 Atorvastatin night	16 Lisinopril morning
17 Metformin with breakfast	18 Atorvastatin night	19 Lisinopril morning	20 Metformin with breakfast	21 Atorvastatin night	22 Lisinopril morning	23 Metformin with breakfast
24 Atorvastatin night	25 Lisinopril morning	26 Metformin with breakfast	27 Atorvastatin night	28 Lisinopril morning	29 Metformin with breakfast	30 Atorvastatin night

The medication

The time

This monthly calendar will appear after you click on that month. It shows what medication you should take each day. If you want to check the detailed time you can click on that day, and it will show you the daily plan (shown in next slide).



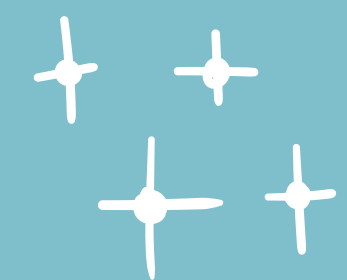
If you click on a specific day, for example, November 22nd, then you can see the medication schedule for that day only. It will show you all the medications you should take on that day and when you should take them. In this case, take Lisinopril in the morning. For this one it doesn't have a specific time, but if the medication should be taken in a specific hour, it will also be shown here too.



All the medication you should take will be listed here

When you should take the medication

Can click on any of the days to see the schedule for that day





You can click on this if you need emergency care. After pressing, it will ask you to confirm so that you wouldn't press this by accident

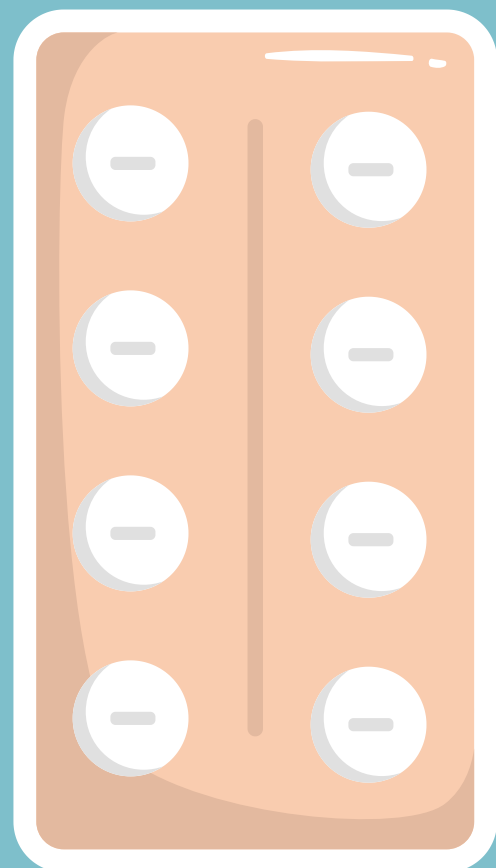


It's located in the middle



This is the Emergency Page, which has a big red SOS button in the center. If the users feel really unwell they can press this button to get help. In the settings, the users can set up whom to contact once pressed this button. The users can add doctors, family, friends, and so on.








This is the Chat Page, where the users can chat with their doctors and other health care providers. They can ask questions, communicate, or make confirmation on any unsure medications.



Profile picture

Status

Chat

-  **Dr. Singh** 1d
take one tablet, three time...
-  **Dr. Campbell** 1d
I've updated your medication p...
-  **Nurse Riya** 2d
Good evening! How are you feeling? Jus...
-  **Tech Morales** 3d
Your blood sample is ready an...
-  **Dr. Hale** 4d
I've reviewed your recent lab r...
-  **PA Zhang** 5d
Hi! I prepared the instructions...
-  **Assistant Lane** 5d
Please make sure to take this after meals.

Chat Page

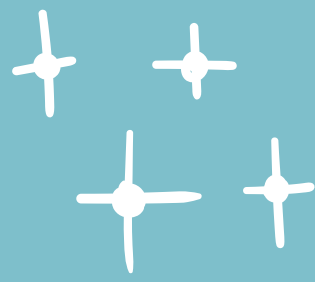


Name or label

Time the message was sent

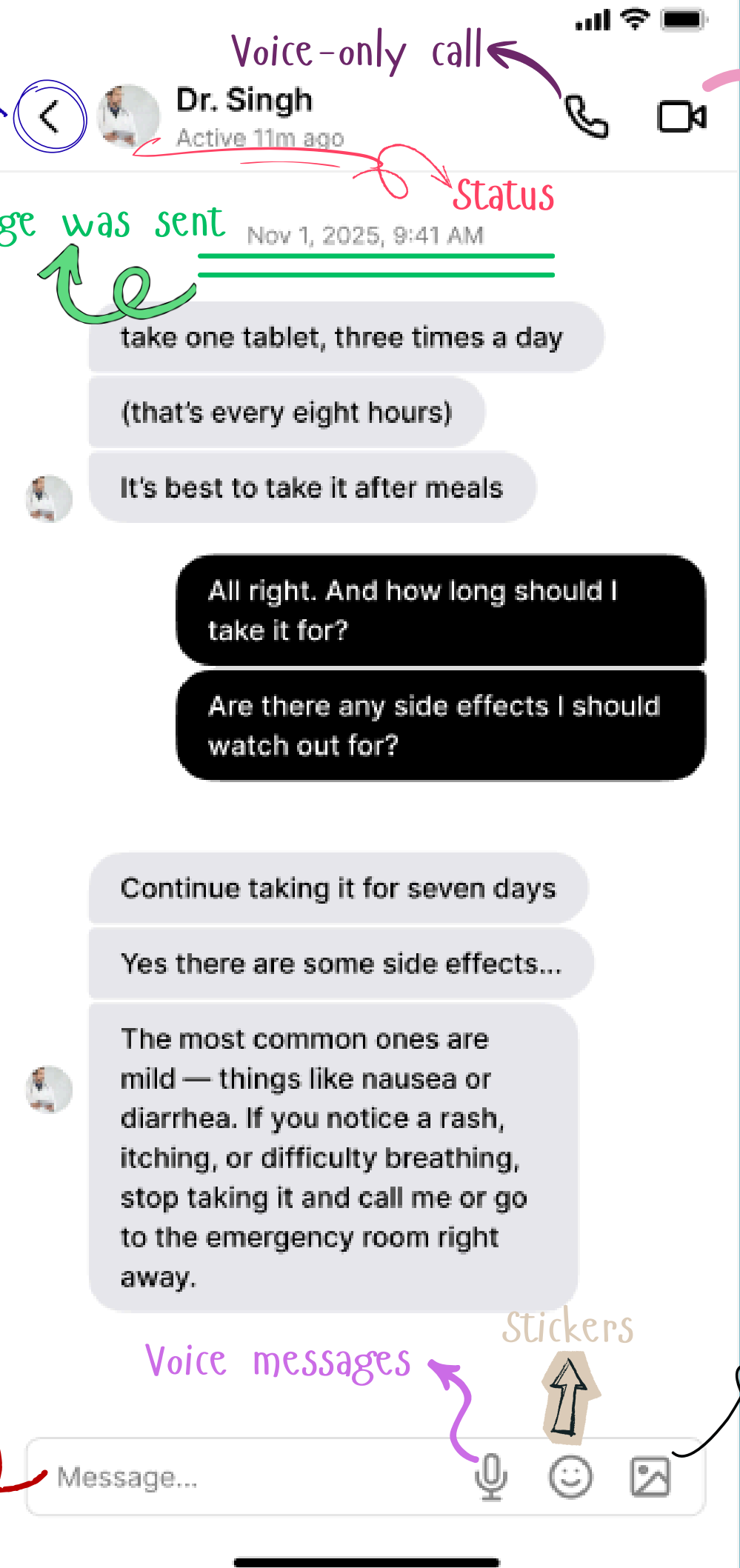
Latest message





Back to the main Chat Page

The date and time the message was sent



The chat is easy to use, so it's senior friendly. There are many different functions, for example, if some seniors don't know how to type, then they can use the voice input. The users can also send picture or call the healthcare providers.



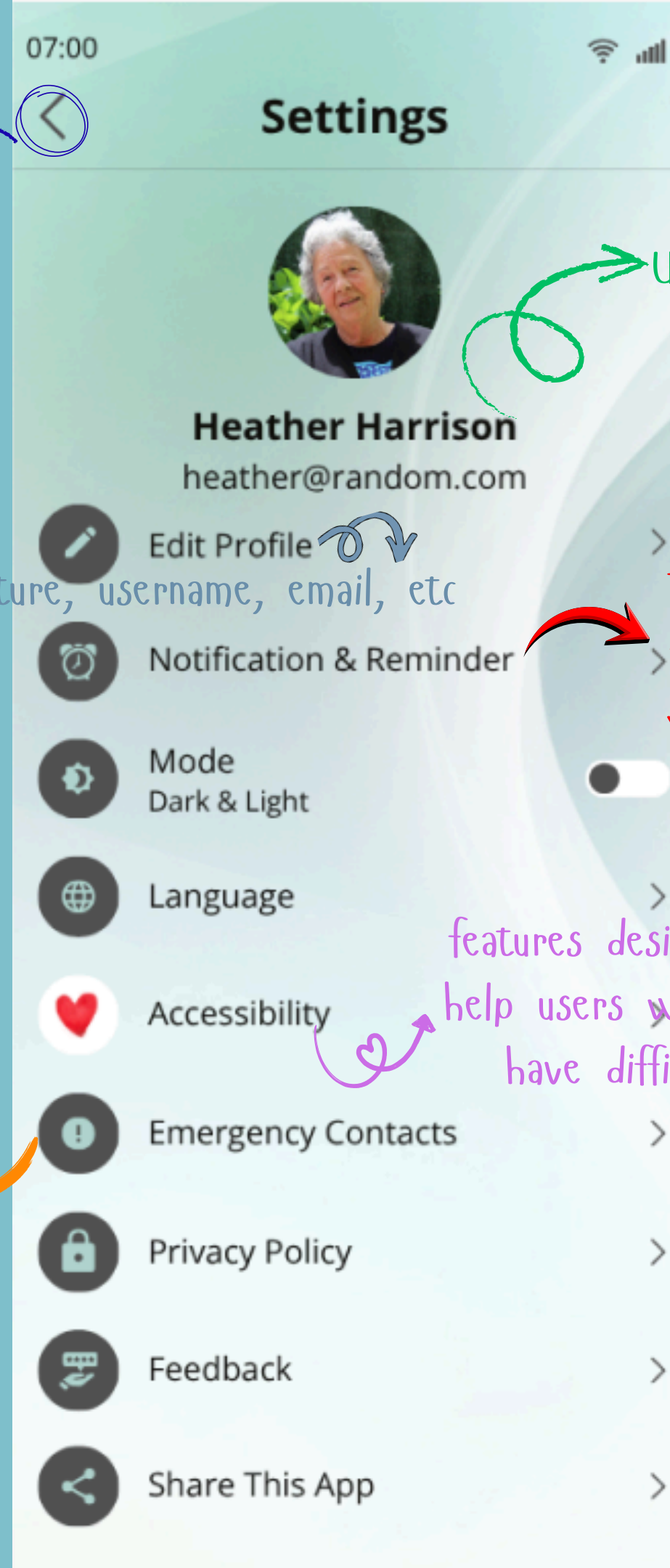
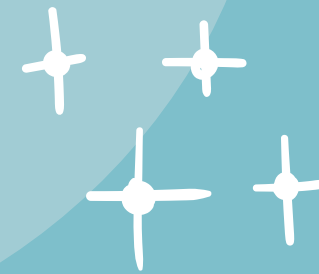
Text messages

Finally, this is what happens when you click on the settings icon. The users can edit many informations and preferences here.

Whom to contact when you click the SOS button

Edit profile picture, username, email, etc

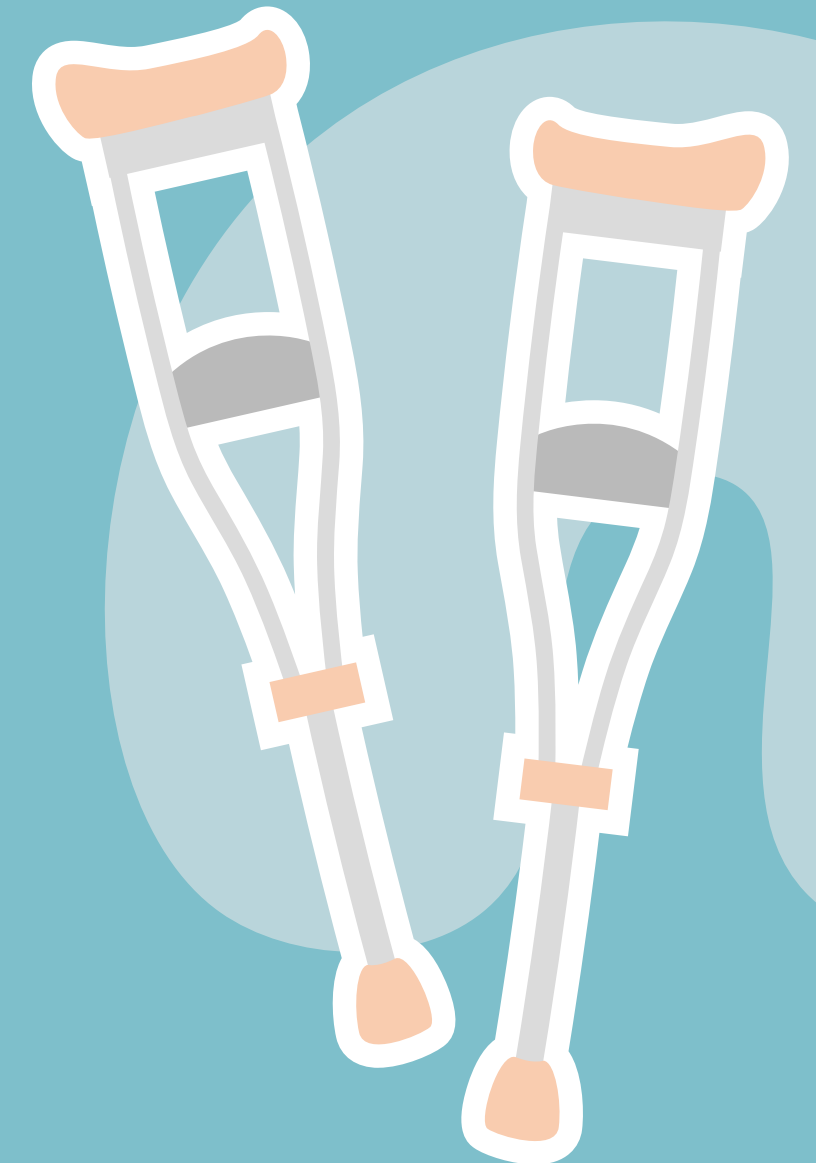
Go back

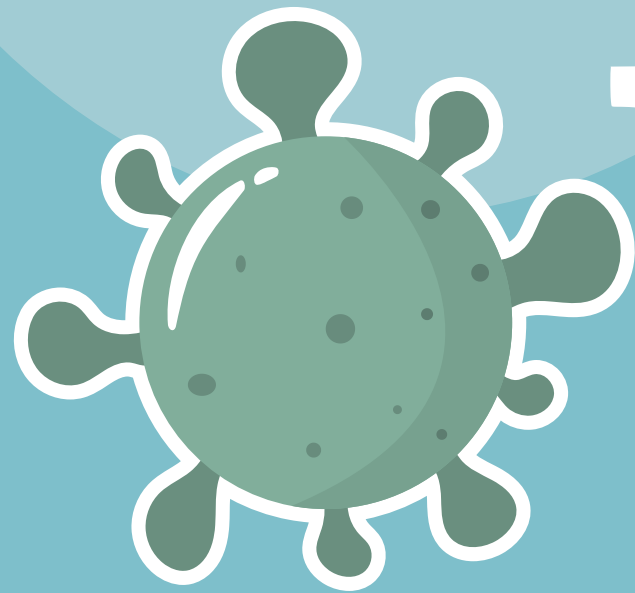
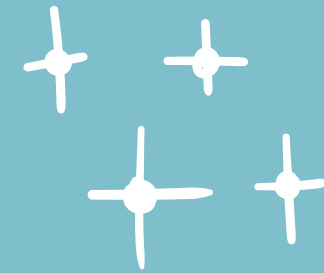


User name and email

The effect you want for the reminder, if you want the phone to vibrate or not

features designed to help users who may have difficulty





The Improved Prototype



After making the first prototype, I've got some feedback from my classmates. Here's the improved version for my app

https://www.canva.com/design/DAG5MSorovw/H-zolW05AhqmqEUkNMjtgw/edit?utm_content=DAG5MSorovw&utm_campaign=designshare&utm_medium=link2&utm_source=harebutton