

Good mothers day gift-personalized charm necklaces for moms

Spring-green personalized charm necklaces for moms with a chain and certain pieces of round glass beads. A definitely good mothers day gift to be given in low budget and limited time.

A charm necklace is an appreciated jewelry option for girls and women of all ages. Hence, if you're a fashion mom this post may just prepare for you. The long personalized charm necklaces for moms consist of a chain adorned with a collection of glaring glass beads and was specially designed for the vigorous spring and early-summer seasons.



Materials needed for a good mothers day gift:



- [Glass Beads](#) of different sizes
- Eyepin
- Jumpring
- Lobster Claw Clasp
- [Chain](#)
- Side Cutting Plier
- Flat Nose Plier
- Round Nose Plier

Instructions for personalized charm necklaces for moms:

Step1: prepare the first beaded component

Take one eyepin and then string one medium-sized bead. Reserve 7mm long at tail and then loop it with round nose plier.

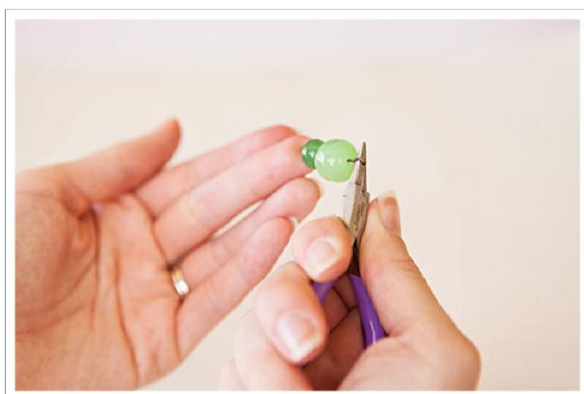
Step2: hang on the bead at middle location on your chain

Snip a strand of chain, find the middle position and then place the above bead on.



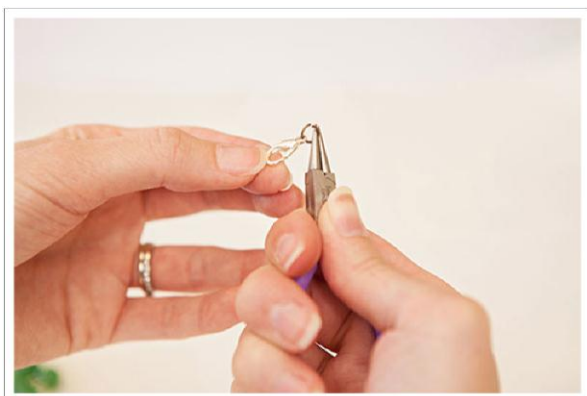
Step3: make more embellishments

1. Thread two beads on one eyepin and loop the end. In my project, I choose one large and one medium size. Make two pieces of such component.



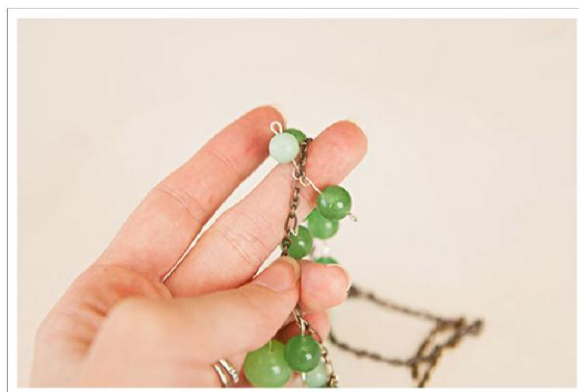
Step5: add on the closure

Once done the focal part, add on the clasp and linking ring with jumprings.



Step4: complement the middle chain links

Determine the focal beaded part of you necklace and then fill the prepared components one after one.



This is my personalized charm necklaces for moms!



This personalized charm necklaces for moms is made in somewhat random and free pattern. Hence, you can choose a wide range of beads and arrange each element in the way you want. No matter what your budget is, you'll create good mothers day gift if you devoted to it!

Search for more types of beads and charms please click: <http://www.pandahall.com/>