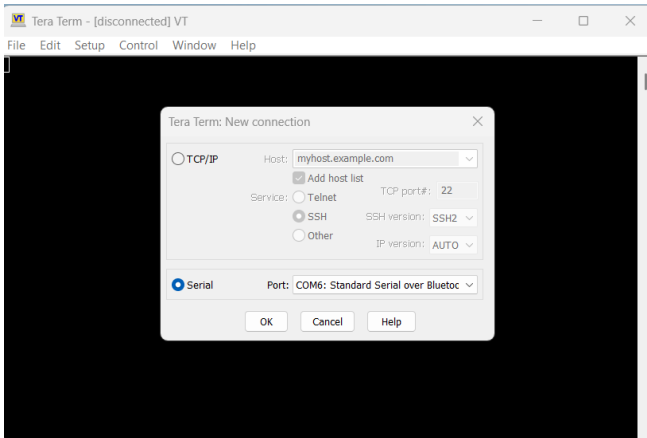


# Configuring TeraTerm

Position your robot for plotting with the wheels along the X axis.

Switch on your robot.

If you haven't already done so, pair your PC's Bluetooth with the Robot's HC-05 Bluetooth module



Launch TeraTerm

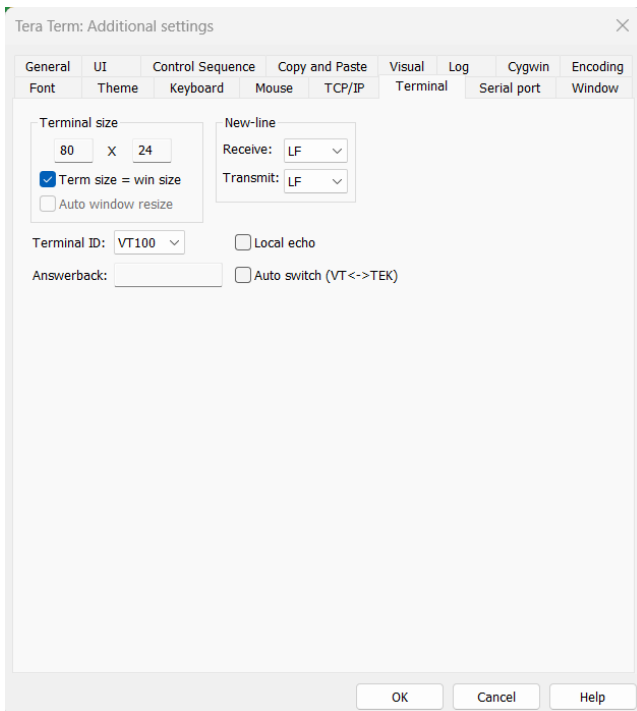
Click Serial

Click Ok

Press "reset" on your Arduino

Data from the plotter should appear.

If it doesn't swap the Serial Port

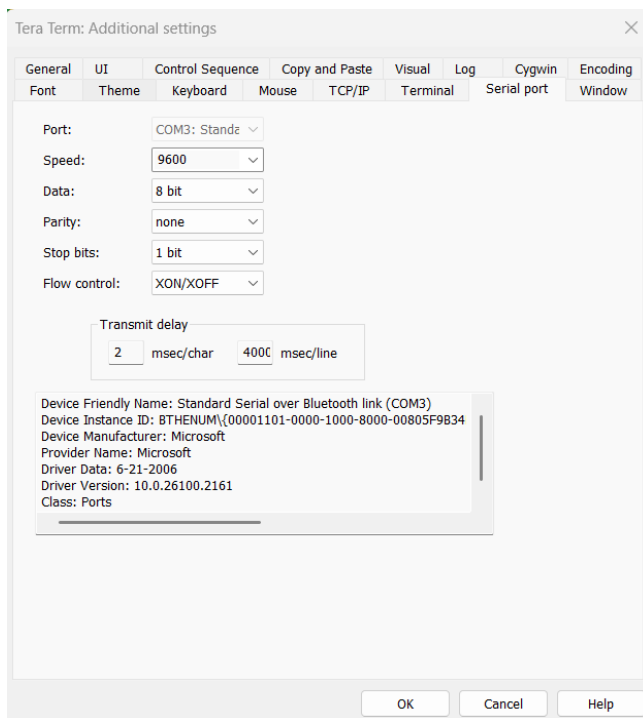


Click Setup -> Serial

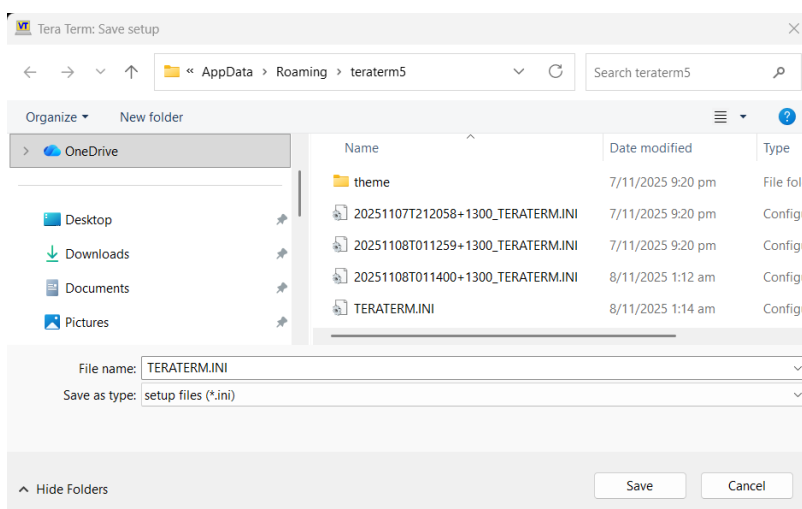
Set New-line Receive to LF (line-feed)

Set New-line Transmit to LF (Line-feed)

Click OK



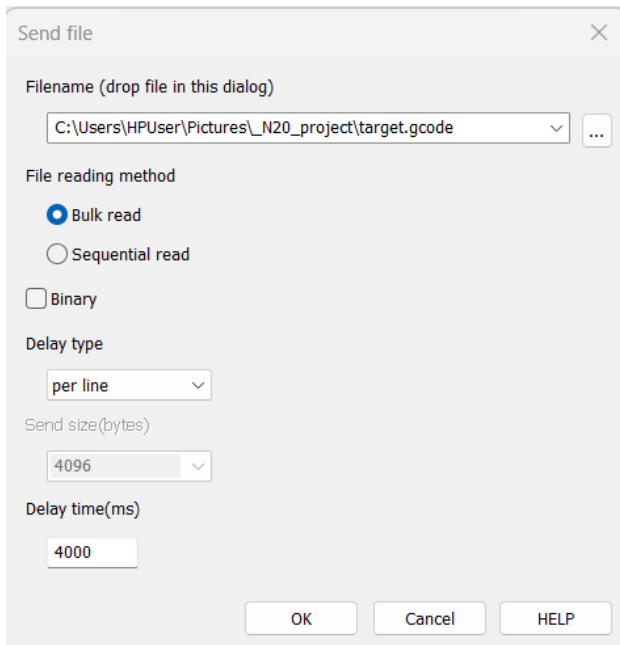
Click Setup -> Serial Port  
Set Speed to 9600  
Set Data to 8 bit  
Set Parity to none  
Set Stop bits to 1  
Set Flow Control to XON/XOFF  
Set Transmit delay to:  
2ms/char  
4000ms/line  
Click OK



Click Setup -> Save setup  
Use TERATERM.INI  
Click Save

Your settings will be  
restored next time you  
start TeraTerm

**You are now ready to send a file !!!**



Click File -> Send File  
Enter the filename  
Click Bulk Read  
Set Delay type to per line  
Set Delay time (ms) to 4000  
Click OK ... the file will now be sent

